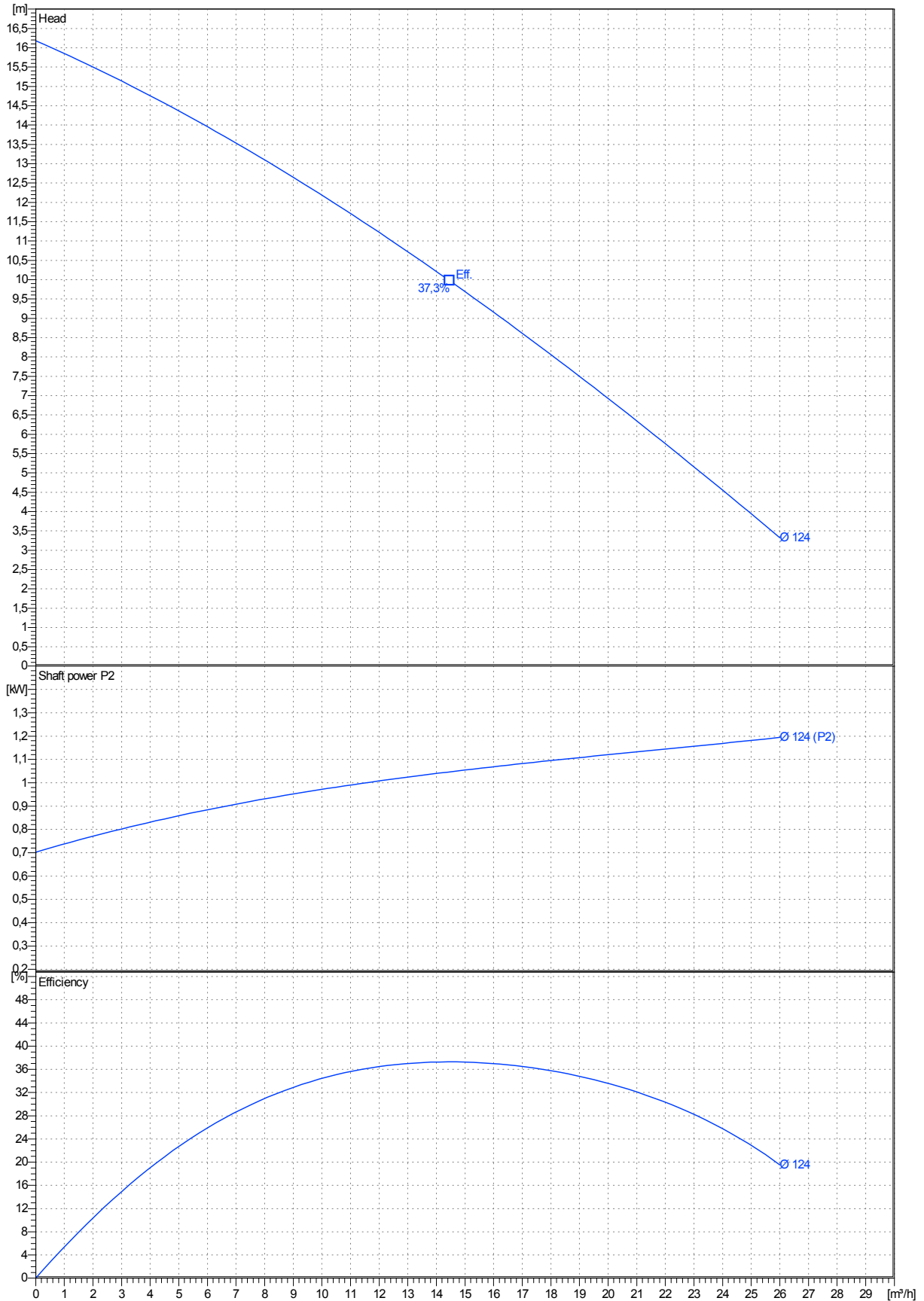


data referred to : Water, pure [100%] ; 20°C; 0,9983kg/dm³; 1,001mm²/s

Tolerances acc. ISO 9906 Annex A



Curves are approximate, pump is guaranteed for one set of conditions (capacity, head, efficiency).

Submersible, centrifugal, non-clogging sewage pump PX0-50.1-2 VORTEX 1 This range of portable non clogging pumps effluents.

The pumps manufactured within European Union with the latest manufacturing and environmental standards .

Materials

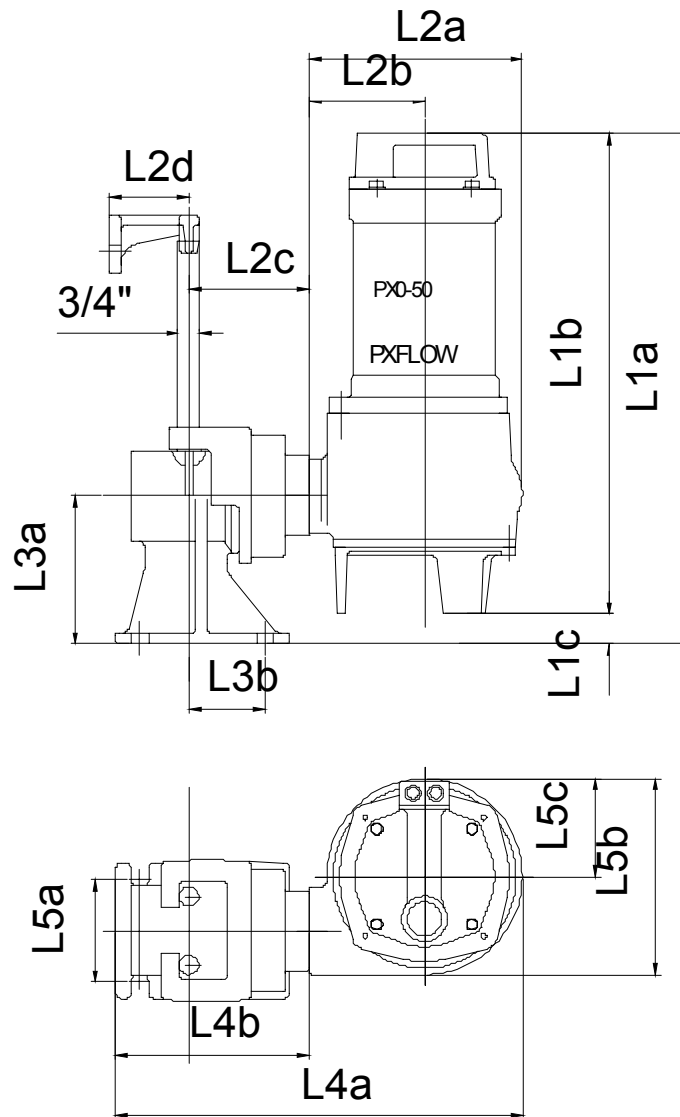
Casting parts :cast iron GG -25

Shaft:stainless steel 431

Shaft seal:Media side sic/sic
Motor side sic/ceramic

Bearings:upper:single row deep groove ball bearing
lower: double angular contact ball bearing

PX0-50.1-2 VORTEX 1 with motor



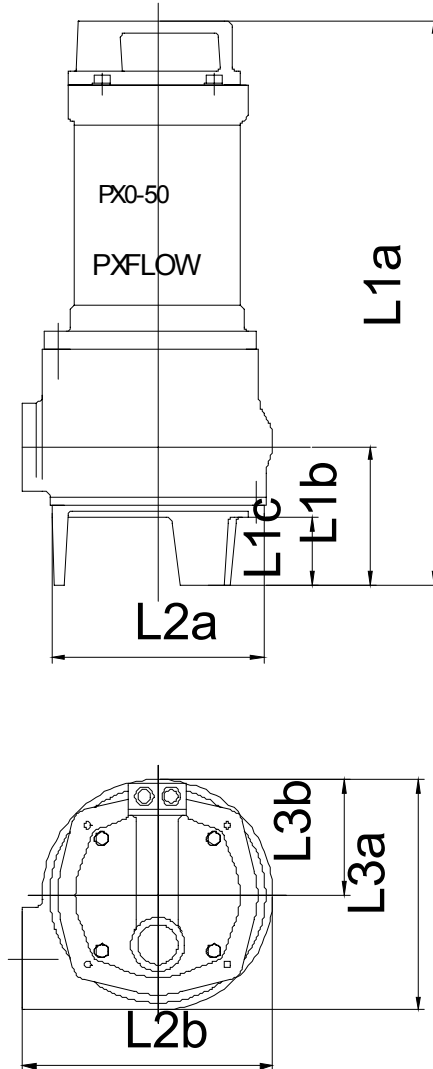
| Dimensions | mm | Dimensions | mm |
|------------|-----|------------|----|
| L1a | 465 | | |
| L1b | 0 | | |
| L1c | 0 | | |
| L2a | 0 | | |
| L2b | 0 | | |
| L2c | 0 | | |
| L2d | 70 | | |
| L3a | 130 | | |
| L3b | 0 | | |
| L4a | 400 | | |
| L4b | 0 | | |
| L5a | 0 | | |
| L5b | 200 | | |
| L5c | 0 | | |

Outlet - Standard : Ø 50mm (G2")

Suction - Standard : Ø 50mm (2")

Total Weight of Pump =24 kg
Weight of Adapter =23,5 kg

PX0-50.1-2 VORTEX 1 with motor



| Dimensions | mm | Dimensions | mm |
|------------|-----|------------|----|
| L1a | 430 | | |
| L1b | 0 | | |
| L1c | 0 | | |
| L2a | 0 | | |
| L2b | 290 | | |
| L3a | 200 | | |
| L3b | 0 | | |
| | | | |

Outlet - Standard : Ø 50mm Threaded (G2")

Suction - Standard : Ø 50mm (2")

Total Weight of Pump =24 kg
Weight of Base for Transportable=0 kg