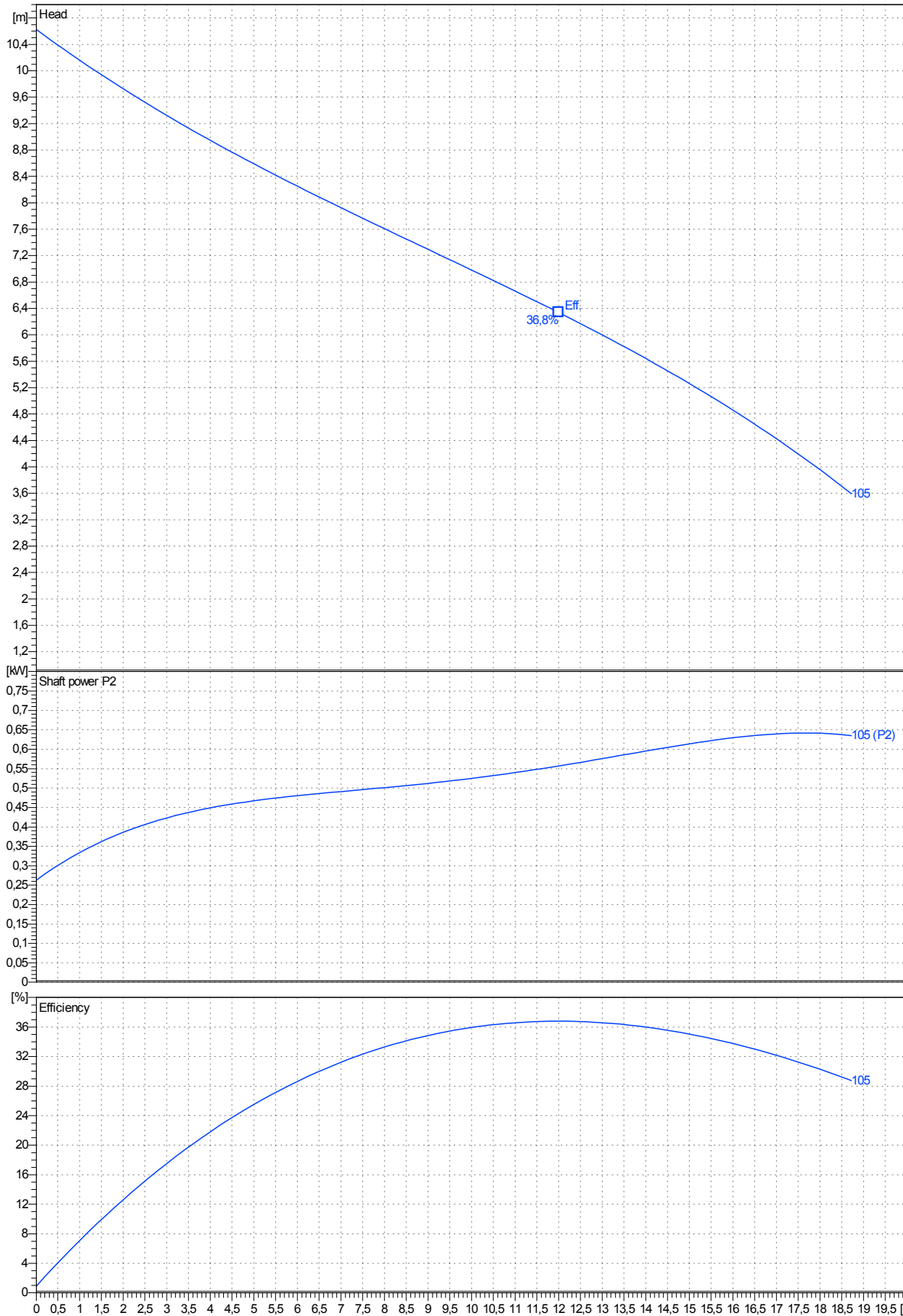


data referred to : Water, pure [100%] ; 20°C; 0,9983kg/dm³; 1,001mm²/s

Tolerances acc. ISO 9906 Annex A



Curves are approximate, pump is guaranteed for one set of conditions (capacity, head, efficiency).

Submersible, centrifugal, non-clogging sewage pump PX0-37.1-2 VORTEX 1 This range of portable non clogging pumps effluents.

The pumps manufactured within European Union with the latest manufacturing and environmental standards .

Materials

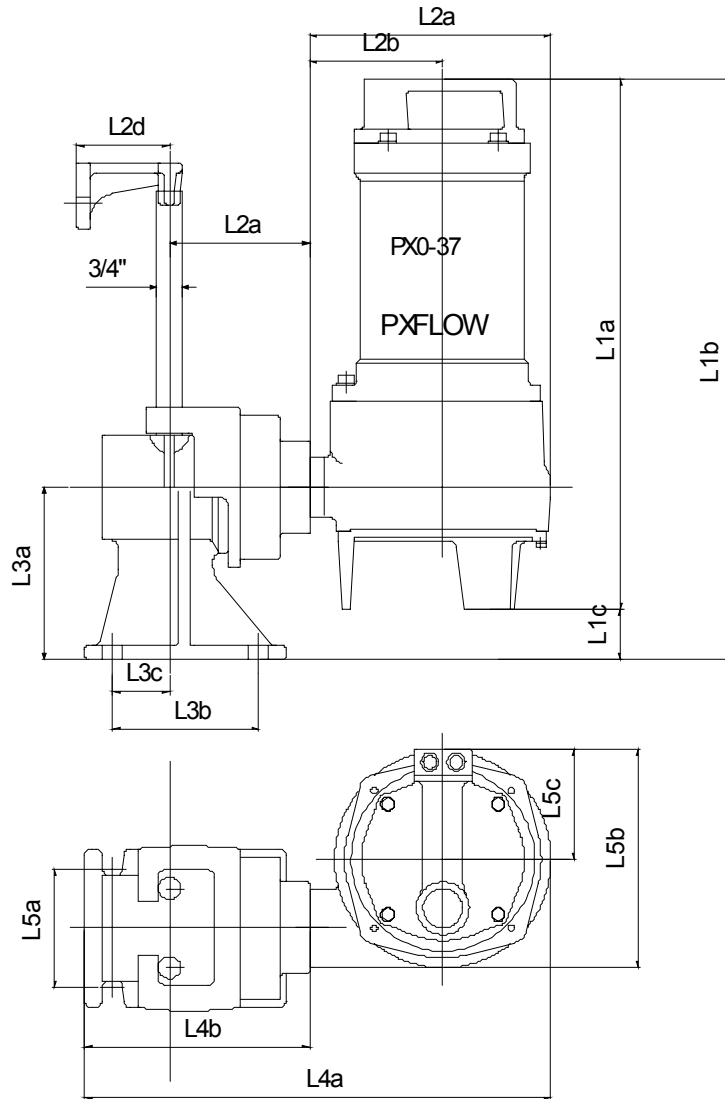
Casting parts :cast iron GG -25

Shaft:stainless steel 431

Shaft seal:Media side sic/sic
Motor side sic/ceramic

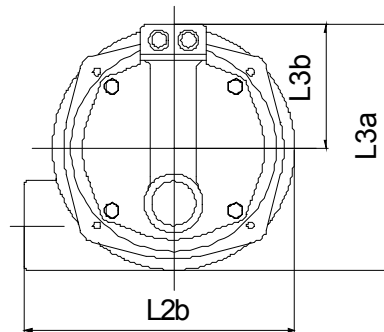
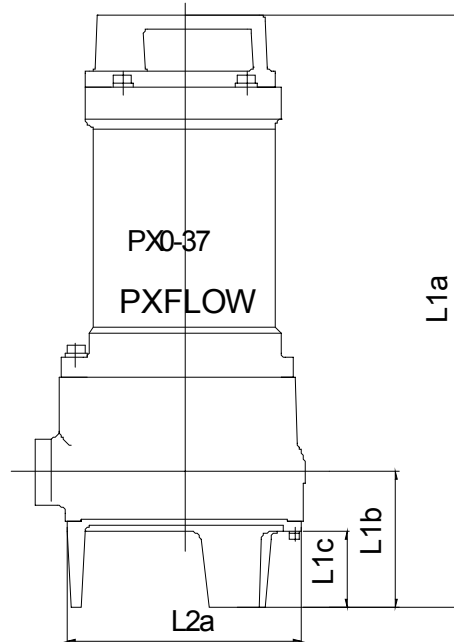
Bearings:upper:single row deep groove ball bearing
lower: double angular contact ball bearing

PX0-37.1-2 VORTEX 1 with motor



Dimensions	mm	Dimensions	mm	
L1a	401,5	L5c	82	Outlet - Standard : Ø 37mm (G1 1/2") Suction - Standard : Ø 37mm (1 1/2") Total Weight of Pump =14 kg Weight of Adapter =0 kg
L1b	350,5			
L1c	38			
L2a	182			
L2b	101			
L2c	106			
L2d	70			
L3a	130			
L3b	110			
L3c	43			
L4a	353			
L4b	170			
L5a	90			
L5b	165			

PX0-37.1-2 VORTEX 1 with motor



Dimensions	mm	Dimensions	mm
L1a	401,5		
L1b	92		
L1c	51		
L2a	158		
L2b	183		
L3a	165,5		
L3b	83,5		

Outlet - Standard : Ø 37mm Threaded (G1 1/2")

Suction - Standard : Ø 37mm (1 1/2")

Total Weight of Pump =14 kg
Weight of Base for Transportable=0 kg