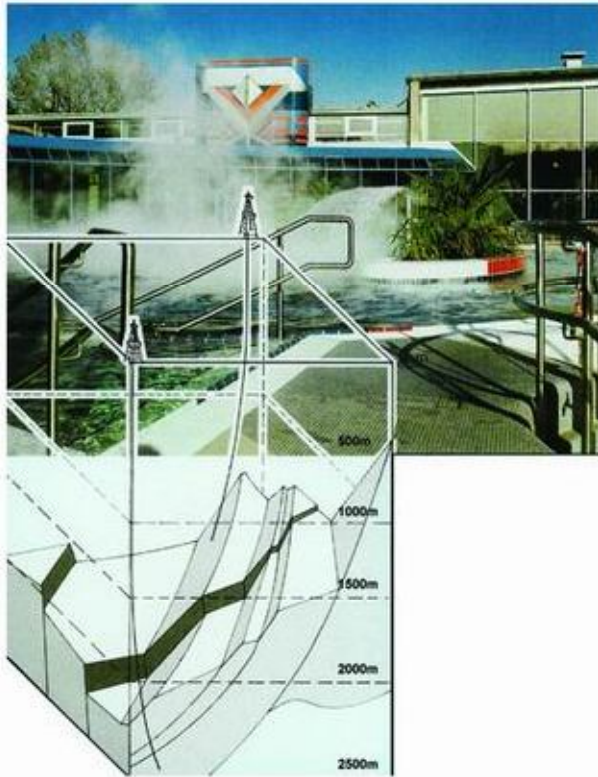


**Submersible Pumps & Water Filled Motors**



## Hot Water and Geothermal

For the pumping of high-temperature water, PLEUGER offers a wide range of submersible pumps with different design features to cope increasing temperature loads; i. e. standard units modified standard units and special designs for hot water.



The extreme demands made on material stability are met by careful selection of materials.

Thanks to its highly developed motor technology, PLEUGER is also specialized in hot-water pumping for industrial water and therm water applications (swimming pools, greenhouses, district heating). PLEUGER is thus making a great contribution to the utilization of alternative energies.

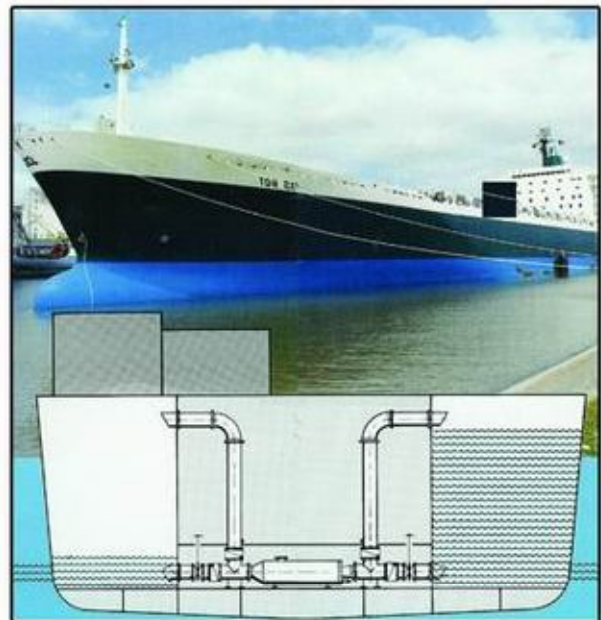
## Ships

PLEUGER submersible pumps are used in a variety of applications on ships in water ballast or trimming systems.

The space-saving compact design and the maintenance-free operation of the submersible pumps permit installation even in areas where access is difficult.

PLEUGER submersible pumps can be used in any installation position.

Because PLEUGER axial flow pumps can be operated in reverse, they have the advantage that the system can be operated in either direction with a single pump.



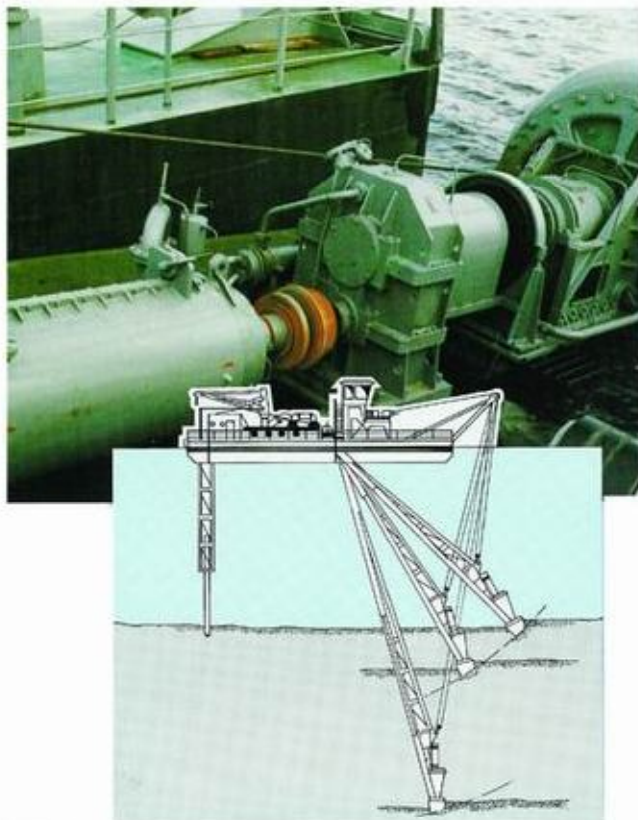
# PLEUGER

## Submersible Motors Applications

### Dredgers

One further special field of application for Pleuger submersible motors is in dredgers which excavate far below the water surface. The submersible motors can be utilized both to drive the dredger pumps and the cutter heads. Power transmission shafts with multiple bearings are not required.

The pressure-compensated submersible motors drive the cutter heads on the dredger's ladder directly by



means of a reduction gear box. Because of their robust construction, the submersible motors are able to withstand the hard strokes and the high acceleration forces arising during the piling operation.

### Special Designs

PLEUGER manufactures submersible motors according to special customer requirements and for specific applications – e.g. foot-mounted motors for horizontal installation motors with modified motor shafts for the direct connection of all types of machines, motors for hot water or for utilization in special media (see photo: PLEUGER submersible motor VNR 50 with a directly coupled centrifugal dredger pump). The high efficiency, the robust construction and the long life of the maintenance-free PLEUGER submersible motor permits unrestricted utilization of all advantages offered by a submersible drive.





**FLOWSERVE**  
Pump Division

**Flowserve Hamburg GmbH**

Friedrich-Damm 105  
D-22047 Hamburg  
Postfach P.O.Box :70 13 20  
D-22013 Hamburg  
Tel.: +49 40 6 96 89 - 0  
Fax: +49 40 6 96 89 - 488



**PAPANTONATOS**  
Pumps service & engineering

**Roumelis & Afon Douna 1**  
13671 Acharnes - Attiki  
P.O. BOX 46546  
Tel : +30 210 2431111  
Fax : +30 210 2431601  
Web : [www.papantonatos.gr](http://www.papantonatos.gr)