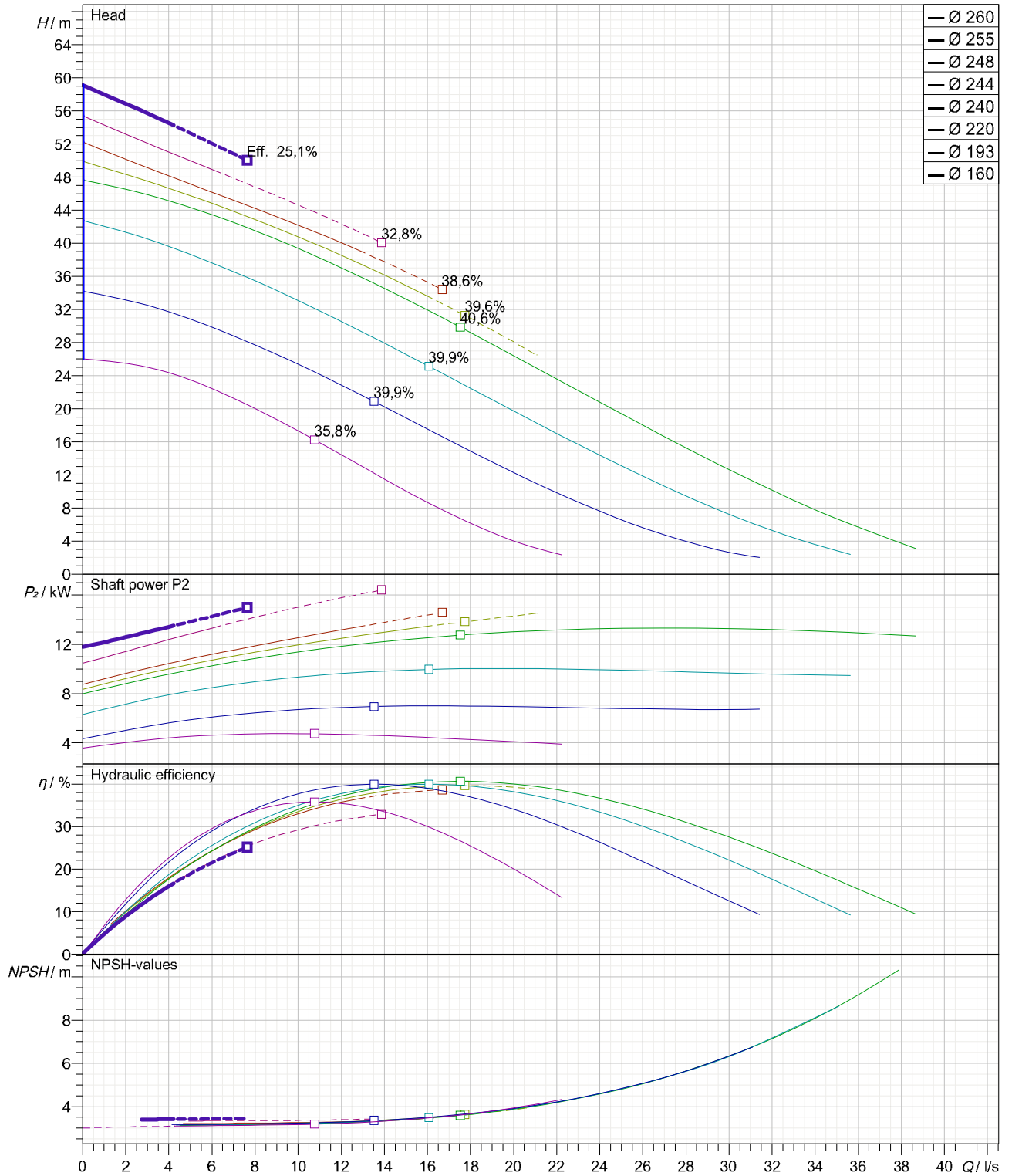


data referred to : Water; 20°C; 998,3kg/m³; 1,005mm²/s

Tolerances acc. ISO 9906 Grade 2B



Curves are approximate, pump is guaranteed for one set of conditions (capacity, head, efficiency).

Submersible, centrifugal, non-clogging sewage pump PX2- 80.0-2 VORTEX 1 capable of handling raw,unscreened sewage.

The pumps manufactured within European Union with the latest manufacturing and environmental standards and practical standard features as :

- Vortex impeller made in ductile iron GGG40 are of non clogging design
- Channel and vortex impellers can be accommodated in the same volute. This advance together with possibility to be trimmed allow to meet changing duties.
- Wear rings with 'reducer' clearances system allow to be re-positioned axially in order to reduce the clearances between the channel impeller and volute.
- Fast lock connection system latch bolts made in stainless steel for easy removal of the motor together with impeller from the volute.

Submersible motor type M2.1C-13,5 can be capable of operating continuously in submerged for wet installation. Cooling jacket with Internal cooling system is available as option.

-Electrical motor PXFLOW -SIEMENS standard IE1 or higher efficiency class (IE2 or IE3 as option) have Class F insulation (rated for 155 degrees Celsius) as standard (Class H as option)

-Separate sealed terminal connection area

-Rotor shaft oversized made in stainless steel and oversized ball bearings ensuring smooth and vibration free running with extended life time as result.

-Shaft sealing system consist of double mechanical seals built into a replaceable cartridge facilitate quick changes even on-site without special tools.

Motor protections :

- Three thermal overload switches, one per phase, internally wound to combat high temperature loads.
- Built-in moisture sensors to terminal connection area (upper motor side), inside the motor (lower side) and in oil chamber

Materials

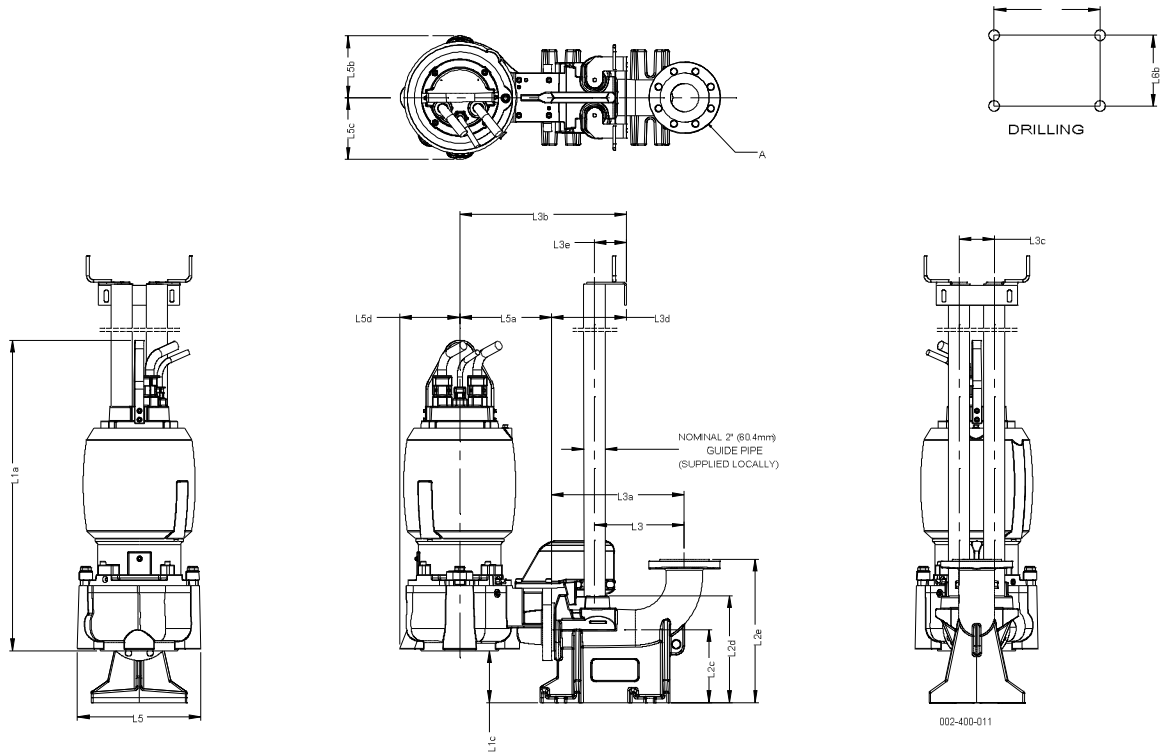
PX2- 80.0-2 VORTEX 1 (Vortex impeller)+13,5 kW

- Motor housing, volute :cast iron GG -25
- Impeller : ductile iron GGG40
- Shaft, cartridge sleeve :stainless steel 431
- Shaft seal:Media side sic/sic
Cooling side sic/sic
- Bearings:upper:single row deep groove ball bearing
lower: double angular contact ball bearing

wet pit installation accesories set (on request)

- Discharge connection bracket (DCB):cast iron GG -25 (standard) or stainless steel (option)
- adapter : ductile iron GGG40 (standard) or stainless steel (option)
- Upper guide bracket (UGB):galvanize steel (standard) or stainless steel (option)

PX2- 80.0-2 VORTEX 1 With motor M2.1C-13,5



Dimensions	mm	Dimensions	mm
Name	Value	Name	Value
L1a	879	L5a	267
L1c	133	L5b	174,5
L2c	200	L5c	174,5
L2d	302	L5d	169
L2e	405,5	L6a	253
L3	254	L6b	140
L3a (DN80)	369		
L3b	376		
L3c	100		
L3d	205		
L3e	91		
L5	350		

For Discharge connection bracket :

Outlet flange - Standard : DN80 / PN10 Flange- Option :3" ANSI class 125
- Option : DN100 / PN10 Flange - Option :4" ANSI class 125

For pump :

Outlet flange - Standard : DN80 / PN16- Option : 3" ANSI class 125
Suction flange - Standard : DN80 / PN16- Option : 3" ANSI class 125

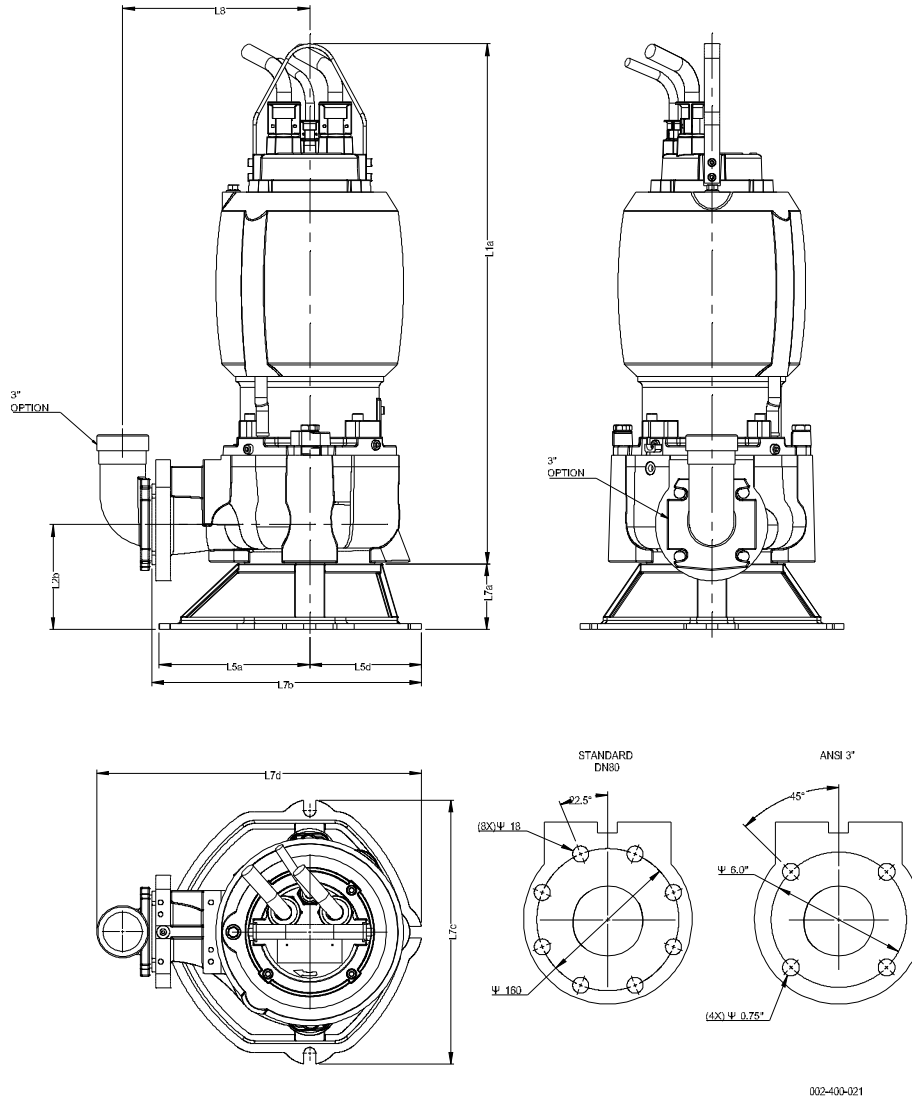
Weight of Pump with cooling jacket = 190 kg
(without cooling jacket : -27 kg)

Weight of Adapter = 10 kg

Weight of Discharge connection bracket (DCB) 80 = 45 kg

Weight of Discharge connection bracket (DCB) 100 = 47

PX2- 80.0-2 VORTEX 1 With motor M2.1C-13,5



002-400-021

Dimensions		Dimensions	
Name	mm	Name	mm
L1a	879		
L2b	177		
L5a	267		
L5d	189		
L7a	110		
L7b	444		
L7c	446		
L7d	543		
L8	316		

Outlet for hose - Option : " 80mm (3")

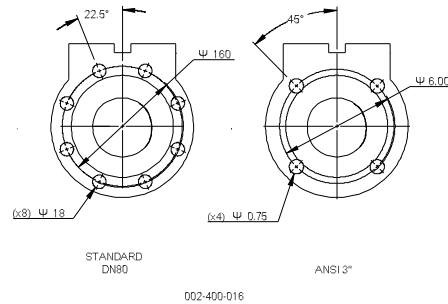
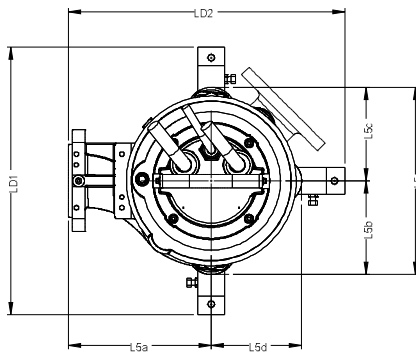
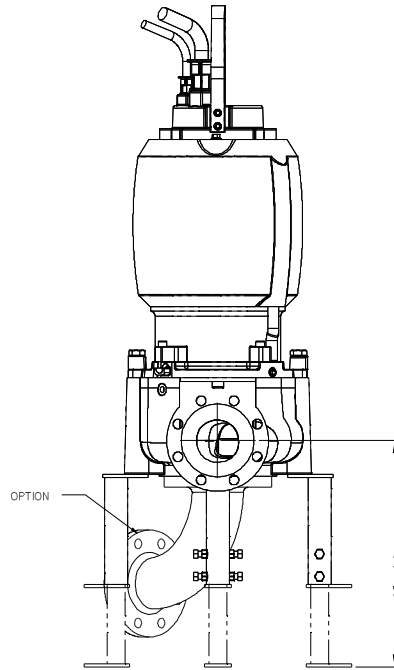
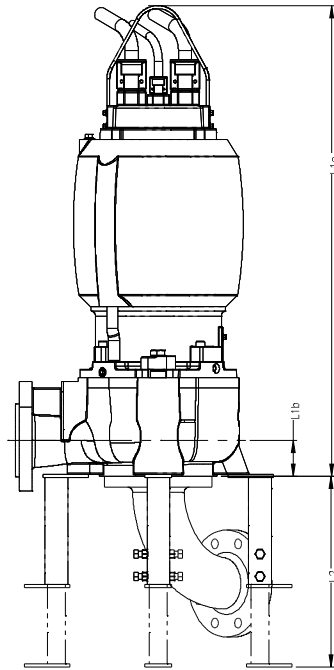
For pump :
Outlet flange - Standard : DN80 / PN16
- Option : 3" ANSI class 125

Suction flange - Standard : DN80 / PN16
- Option : 3" ANSI class 125

Weight of Pump with cooling jacket = 190 kg
(without cooling jacket : -27 kg)

Weight of Base for Transportable = 8,7 kg

PX2- 80.0-2 VORTEX 1 With motor M2.1C-13,5



002-400-016

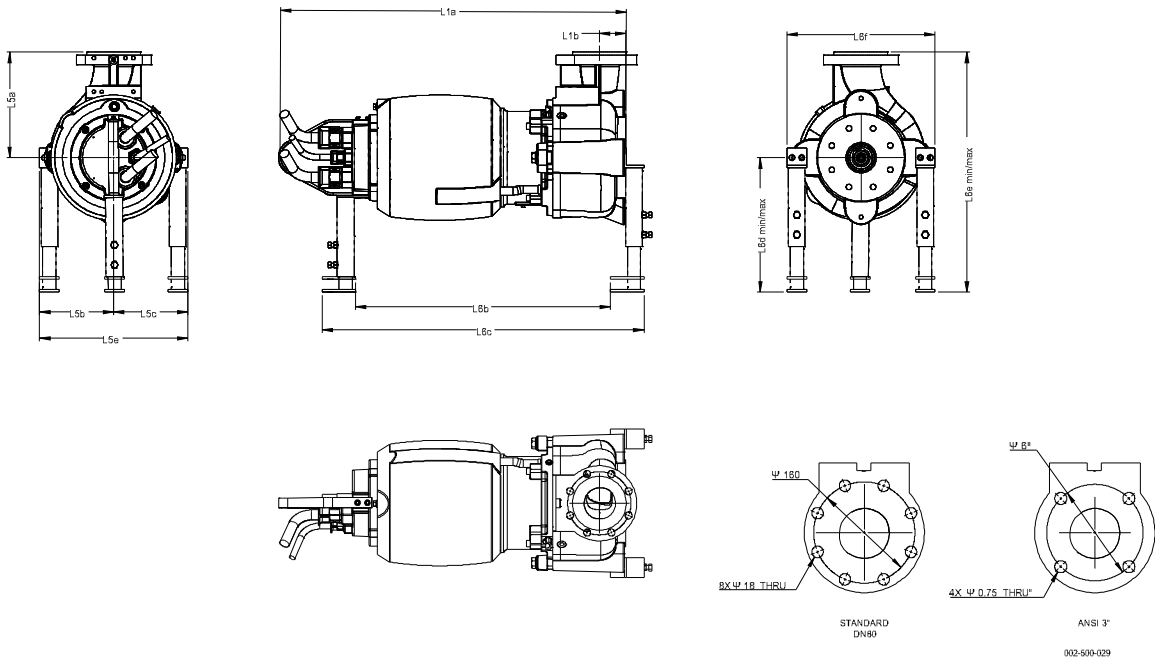
Dimensions	mm	Dimensions	mm
Name	Value	Name	Value
L1a	879	LD2	517
L1b	67		
L2 max	356		
L2 min	208		
L2a max	423		
L2a min	275		
L5	350		
L5a	267		
L5b	175		
L5c	175		
L5d	169		
LD1	500		

Outlet flange - Standard : DN80 / PN16
- Option : 3" ANSI class 125

Suction flange - Standard : DN80 / PN16
- Option : 3" ANSI class 125

Weight of Pump with cooling jacket = 190 kg
Weight of Adjustable Legs = 6,1 kg

PX2- 80.0-2 VORTEX 1 With motor M2.1C-13,5



Dimensions	mm	Dimensions	mm
Name	Value	Name	Value
L1a	879	L6f	375
L1b	67		
L5a	267		
L5b	187,5		
L5c	187,5		
L5e	375		
L6b	645		
L6c	815		
L6d max	308,1		
L6d min	339,5		
L6e max	575,1		
L6e min	606,5		

Outlet flange - Standard : DN80 / PN16
 - Option : 3" ANSI class 125

Suction flange - Standard : DN80 / PN16
 - Option : 3" ANSI class 125

Weight of Pump with cooling jacket = 196,1 kg
 Weight of Adjustable Legs = 6,1 kg