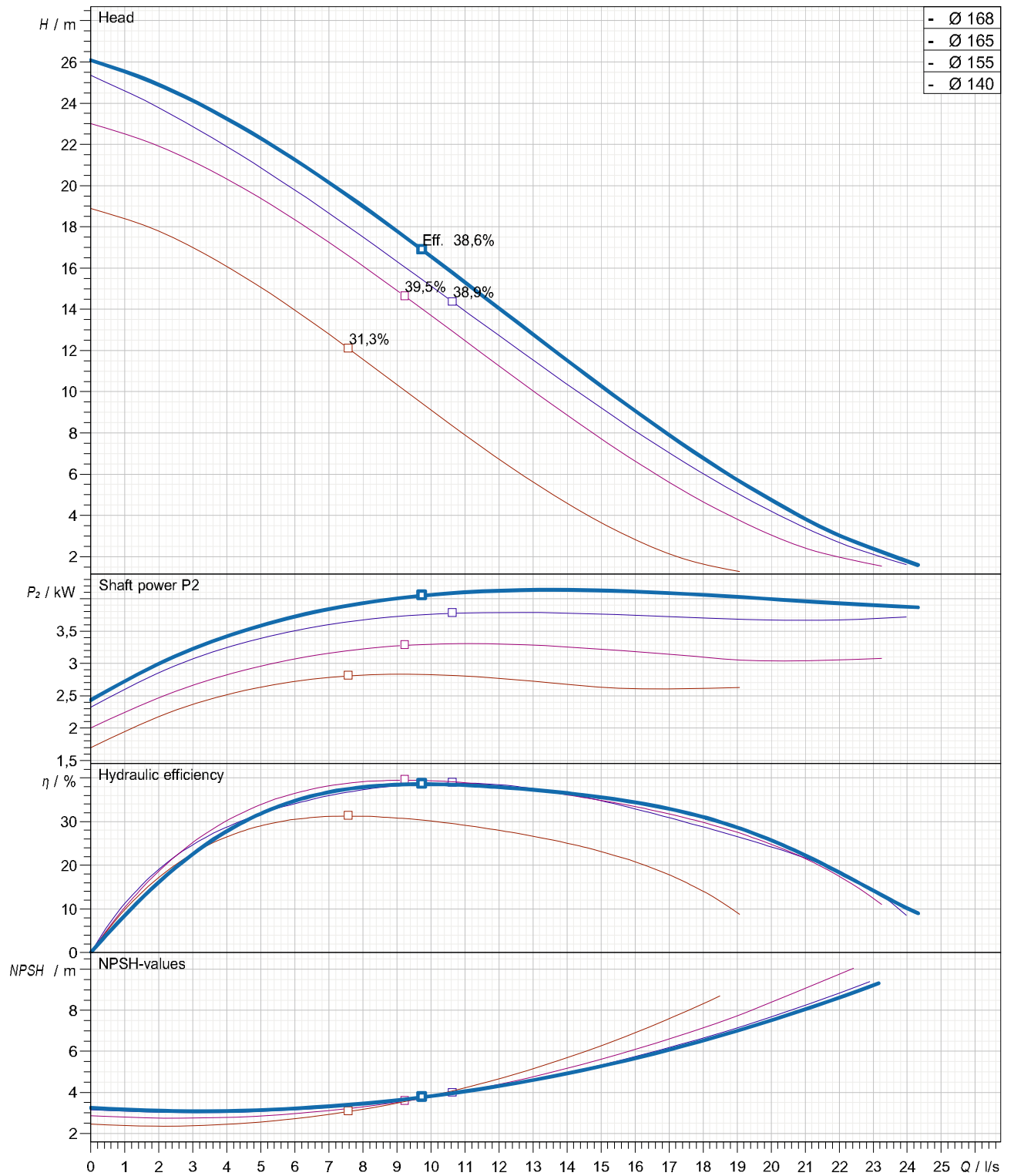


data referred to : Water; 20°C; 998,3kg/m³; 1,005mm²/s

Tolerances acc. ISO 9906 Grade 2B



Curves are approximate, pump is guaranteed for one set of conditions (capacity, head, efficiency).

Submersible, centrifugal, non-clogging sewage pump PX1-83.0-2 VORTEX 1 capable of handling raw,unscreened sewage.

The pumps manufactured within European Union with the latest manufacturing and environmental standards and practical standard features as :

- Vortex impeller made in ductile iron GGG40 are of non clogging design
- Channel and vortex impellers can be accommodated in the same volute. This advance together with possibility to be trimmed allow to meet changing duties.
- Wear rings with 'reducer' clearances system allow to be re-positioned axially in order to reduce the clearances between the channel impeller and volute.
- Fast lock connection system latch bolts made in stainless steel for easy removal of the motor together with impeller from the volute.

Submersible motor type M1.1A- 5,0 can be capable of operating continuously in submerged for wet installation. Cooling jacket with Internal cooling system is available as option.

-Electrical motor PXFLOW -SIEMENS standard IE1 or higher efficiency class (IE2 or IE3 as option) have Class F insulation (rated for 155 degrees Celsius) as standard (Class H as option)

-Separate sealed terminal connection area

-Rotor shaft oversized made in stainless steel and oversized ball bearings ensuring smooth and vibration free running with extended life time as result.

-Shaft sealing system consist of double mechanical seals built into a replaceable cartridge facilitate quick changes even on-site without special tools.

Motor protections :

- Three thermal overload switches, one per phase, internally wound to combat high temperature loads.
- Built-in moisture sensors to terminal connection area (upper motor side), inside the motor (lower side) and in oil chamber

Materials

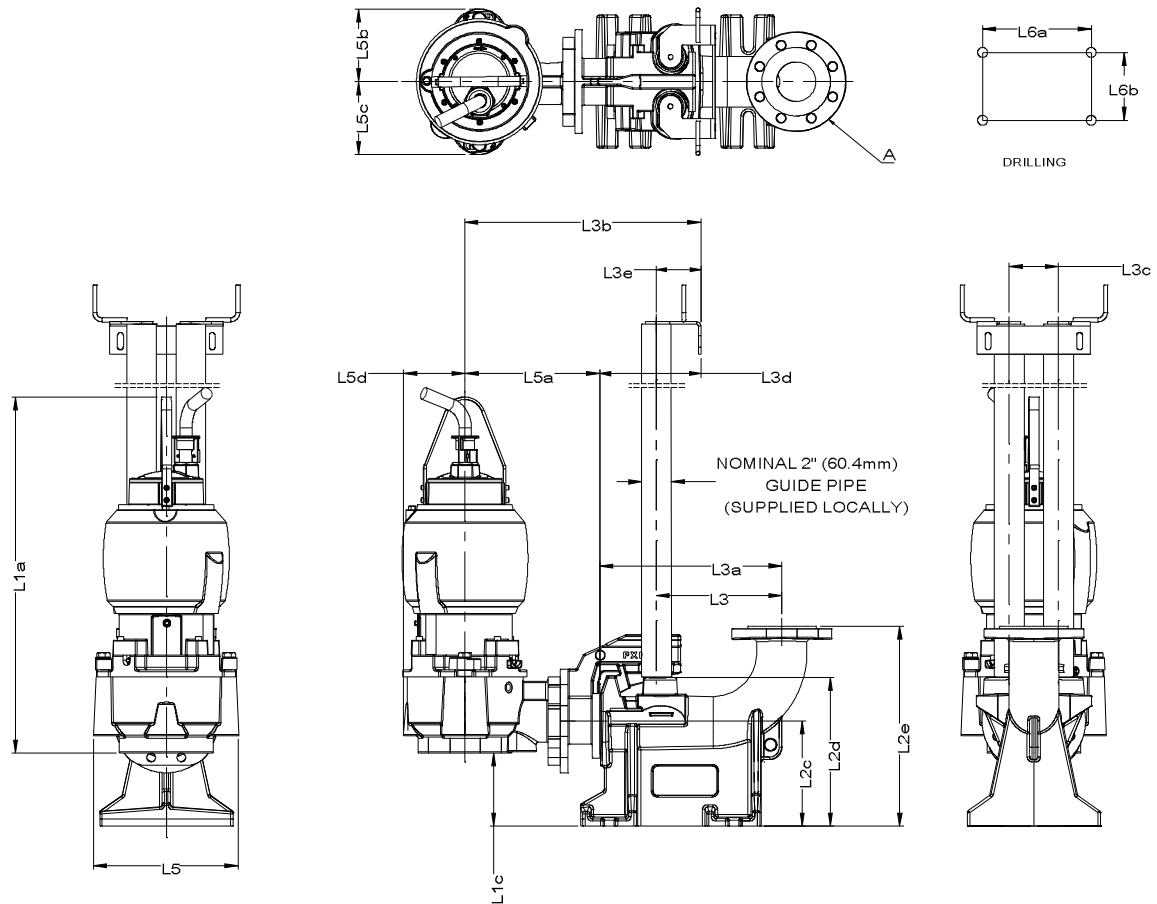
PX1-83.0-2 VORTEX 1 (Vortex impeller)+5 kW

- Motor housing, volute :cast iron GG -25
- Impeller : ductile iron GGG40
- Shaft, cartridge sleeve :stainless steel 431
- Shaft seal:Media side sic/sic
Cooling side carbon/ceramic
- Bearings:upper:single row deep groove ball bearing
lower: double angular contact ball bearing

wet pit installation accesories set (on request)

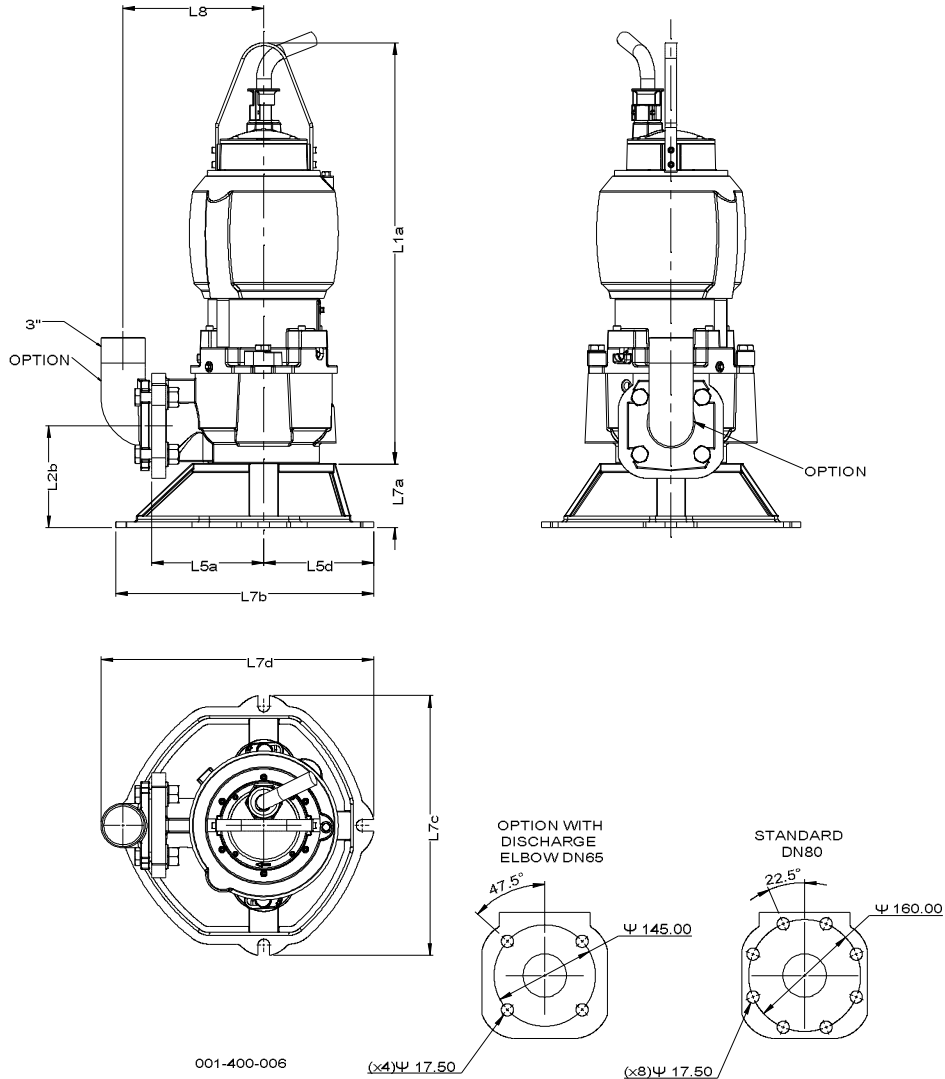
- Discharge connection bracket (DCB):cast iron GG -25 (standard) or stainless steel (option)
- adapter : ductile iron GGG40 (standard) or stainless steel (option)
- Upper guide bracket (UGB):galvanize steel (standard) or stainless steel (option)

PX1-83.0-2 VORTEX 1 With motor M1.1A-5,0



Dimensions	mm	Dimensions	mm	
Name	Value	Name	Value	For Discharge connection bracket : Outlet flange - Standard : DN80 / PN10 Flange- Option :3" ANSI class 125 For pump : Outlet flange - Standard : DN80 / PN10- Option : 3" ANSI class 125 - Option : DN65 / PN10- Option : 2,5" ANSI class 125 Suction flange - Standard : DN80 / PN10- Option : 3" ANSI class 125 Weight of Pump with cooling jacket = 108,3 kg (without cooling jacket : - 14,2 kg) Weight of Adapter = 13 kg Weight of Discharge connection bracket (DCB) 80 = 45 kg
L1a	722	L5a	273,5	
L1c	148	L5b	148	
L2c	213	L5c	148	
L2d	302	L5d	124,5	
L2e	405,5	L6a	253	
L3	254	L6b	140	
L3a (DN80)	369			
L3b	480			
L3c	100			
L3d	235,5			
L3e	90,5			
L5	293			

PX1-83.0-2 VORTEX 1 With motor M1.1A-5,0

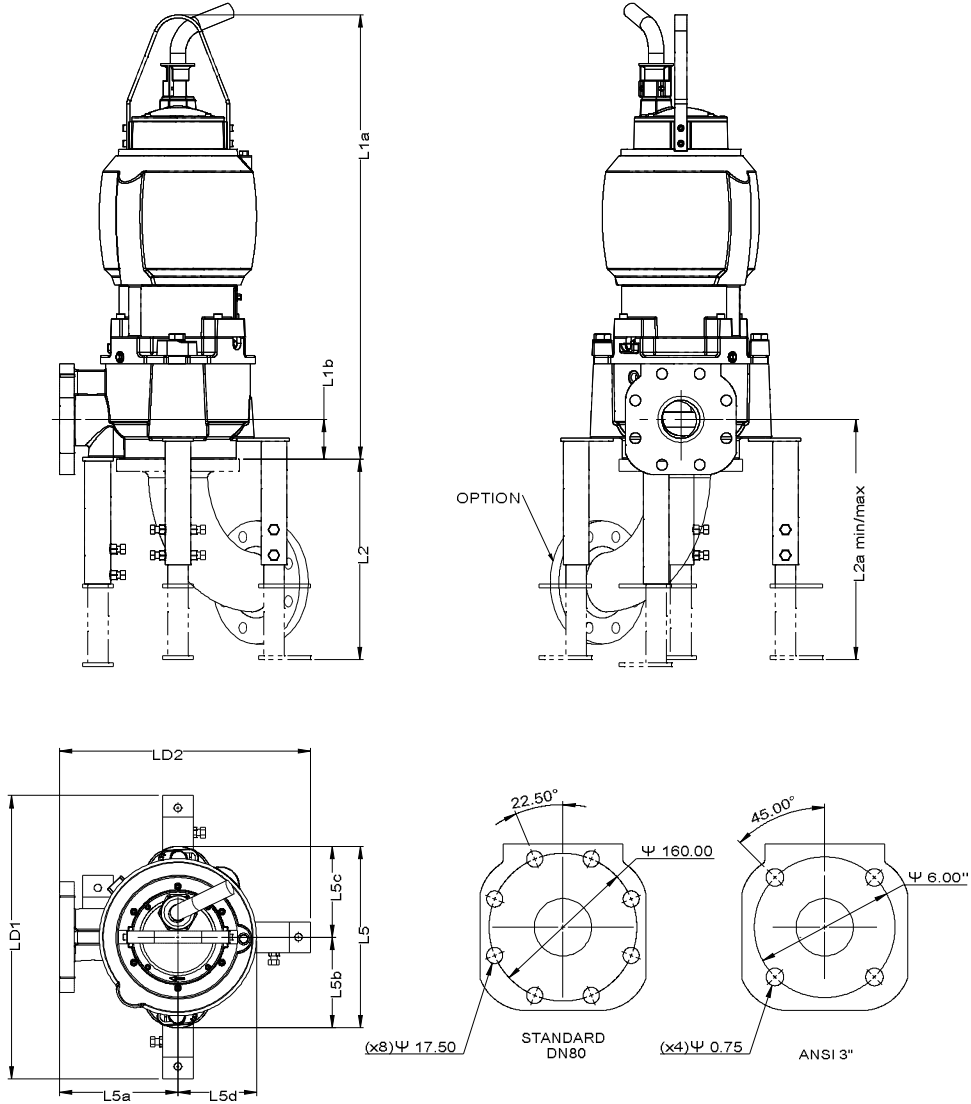


Dimensions		Dimensions	
Name	mm	Name	mm
L1a	687		
L2b	175		
L5a	128		
L5d	189		
L7a	110		
L7b	443		
L7c	446		
L7d	469		
L8	241,5		

- Outlet for hose - Option : " 80mm (3")
 For pump :
 Outlet flange - Standard : DN80 / PN10
 - Option : 3" ANSI class 125
 - Option : DN65 / PN10
 - Option : 2,5" ANSI class 125
 Suction flange - Standard : DN80 / PN10
 - Option : 4" ANSI class 125

Weight of Pump with cooling jacket = 104 kg
 (without cooling jacket : - 14,2 kg)
 Weight of Base for Transportable = 8,7 kg

PX1-83.0-2 VORTEX 1 With motor M1.1A-5,0

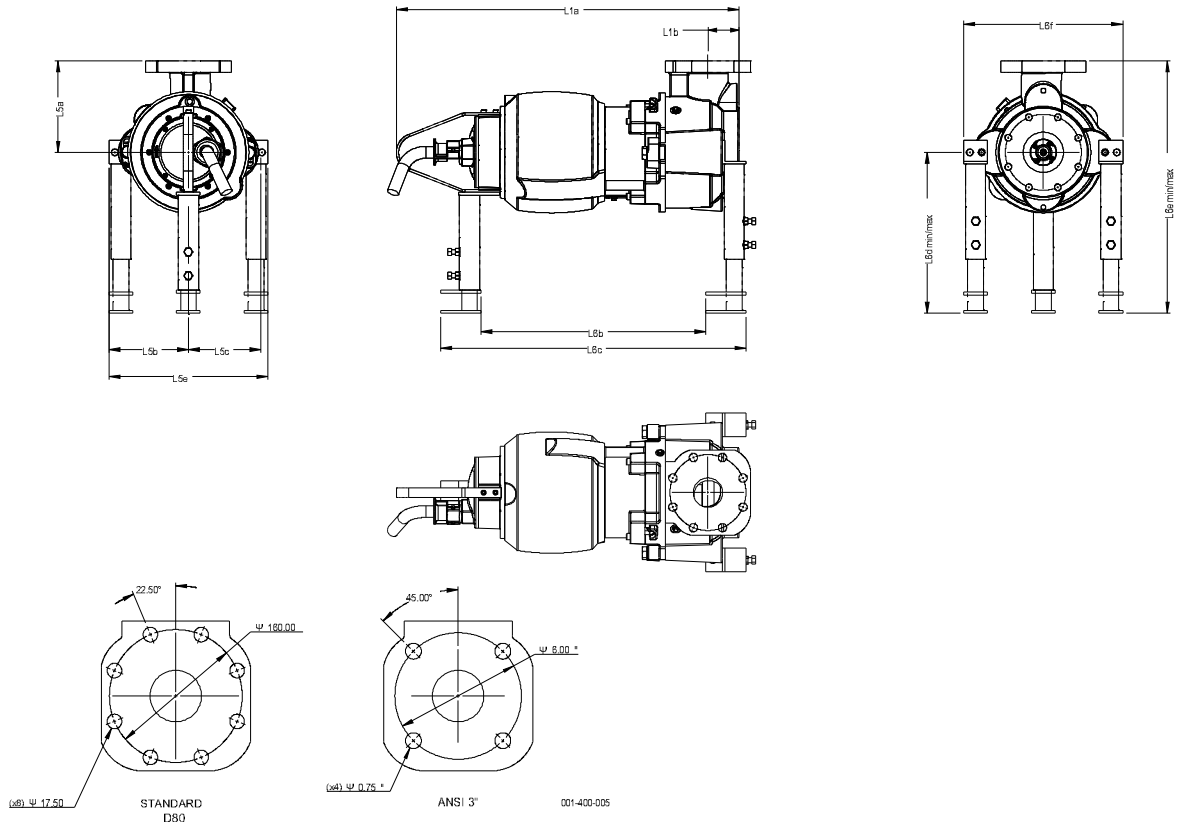


Dimensions	mm	Dimensions	mm
Name	Value	Name	Value
L1a	723	LD1	460
L1b	65	LD2	408,5
L2 min	209		
L2a max	390		
L2a min	274		
L2max	325		
L3c	100		
L5	295		
L5a	192,5		
L5b	147,5		
L5c	147,5		
L5d	128		

- Outlet flange
- Standard : DN80 / PN10
 - Option : 3" ANSI class 125
 - Option : DN65 / PN10
 - Option : 2,5" ANSI class 125
- Suction flange
- Standard : DN80 / PN10
 - Option : 3" ANSI class 125

Weight of Pump with cooling jacket = 101,4 kg
Weight of Adjustable Legs = 6,1 kg

PX1-83.0-2 VORTEX 1 With motor M1.1A-5,0



Dimensions	mm	Dimensions	mm	
Name	Value	Name	Value	Outlet flange - Standard : DN80 / PN10 - Option : 3" ANSI class 125 - Option : DN65 / PN10 - Option : 2,5" ANSI class 125 Suction flange - Standard : DN80 / PN10 - Option : 3" ANSI class 125 Weight of Pump with cooling jacket = 101,4 kg Weight of Adjustable Legs = 6,1 kg
L1a	722	L6f	335	
L1b	65			
L5b	167,5			
L5c	152			
L5e	335			
L5a	192,5			
L6b	473			
L6c	643			
L6d max	332,5			
L6d min	294,5			
L6e max	532			
L6e min	494			