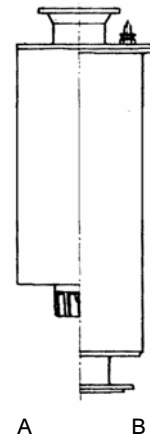
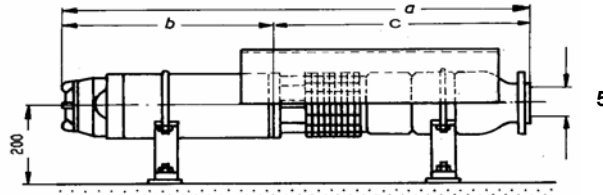


Σύνδεση με τον καταθλιπτικό αγωγό / piping connection

| αφ. Στοιχίου Figure | Στόμιο εξαγωγής με αντεπίστροφη βαλβίδα Non-Return Valve | Στόμιο εξαγωγ. χωρίς βαλβίδα Taper | Μήκος Length e mm | Βάρος Weight kg | τοποθέτηση Installation |
|------------------------|--|--|----------------------------|-----------------------|----------------------------|
| 1 | G3 | | 182 | 7 | v |
| 1 | G4 | | 182 | 8 | v |
| | | | | | |
| | | | | | |



A : cooling shroud
B : pressure shroud (Booster)

| Curve | Αντλία + Κινητήρας Pump + Motor | ονομαστ. στοιχεία Κινητήρα Motor rated data | | | | | max Ø mm | Μήκος / Length | | | Βάρος / Weight | | | τοποθέτηση Installation | Καλώδια κινητήρα Motor leads | | Μανδύας ψύξης/πίεσης cooling/pressure Shroud | | |
|-------|------------------------------------|--|-----|---------------|---------|-----------------|-------------|------------------|-----------------|------------|----------------|------------|---------------------|----------------------------|---------------------------------|---------|---|----|-------------------|
| | | P kW | HP | I (400V) A | Ø mm | a unit mm | | b motor mm | c pump mm | unit kg | motor kg | pump kg | απευθείας direct | | Y-Δ star-delta | D mm | L mm | kg | |
| | | | | | | | | | | | | | | | | | | | Y-Δ star-delta |
| 1 | PN66- 1 + FR4-2,2 | 2,2 | 3 | 5,9 | 95,25 | 150 | 694 | 356 | 338 | 27,5 | 13,5 | 14 | h+v | 1FL 4x1,5 | ----- | 1) | 1) | 1) | |
| 2 | PN66- 2 + FR4-4,0 | 4 | 5,5 | 10 | 95,25 | 150 | 1038 | 583 | 455 | 44,5 | 23,5 | 21 | h+v | 1FL 4x1,5 | ----- | 1) | 1) | 1) | |
| 3 | PN66- 3 + FR4-5,5 | 5,5 | 7,5 | 13,7 | 95,25 | 150 | 1269 | 697 | 572 | 57 | 29 | 28 | h+v | 1FL 4x1,5 | ----- | 1) | 1) | 1) | |
| 4 | PN66- 4 + M6-200 | 7,5 | 10 | 17,2 | 144 | 153 | 1297 | 594 | 703 | 77 | 42 | 35 | h+v | 1FL 4x2,5 | 2FL 3/4x2,5 | 1) | 1) | 1) | |
| 5 | PN66- 5 + M6-270 | 11 | 15 | 24 | 144 | 153 | 1484 | 664 | 820 | 91 | 49 | 42 | h+v | 1FL 4x2,5 | 2FL 3/4x2,5 | 1) | 1) | 1) | |
| 6 | PN66- 6 + M6-270 | 11 | 15 | 24 | 144 | 153 | 1601 | 664 | 937 | 98 | 49 | 49 | h+v | 1FL 4x2,5 | 2FL 3/4x2,5 | 1) | 1) | 1) | |
| 7 | PN66- 7 + M6-270 | 11 | 15 | 24 | 144 | 153 | 1718 | 664 | 1054 | 105 | 49 | 56 | h+v | 1FL 4x2,5 | 2FL 3/4x2,5 | 1) | 1) | 1) | |
| 8 | PN66- 8 + M6-340 | 15 | 20 | 32 | 144 | 153 | 1905 | 734 | 1171 | 120 | 57 | 63 | h+v | 1FL 4x4 | 2FL 3/4x2,5 | 1) | 1) | 1) | |
| 9 | PN66- 9 + M6-340 | 15 | 20 | 32 | 144 | 153 | 2022 | 734 | 1288 | 127 | 57 | 70 | h+v | 1FL 4x4 | 2FL 3/4x2,5 | 1) | 1) | 1) | |
| 10 | PN66-10 + M6-400 | 18,5 | 25 | 39 | 144 | 153 | 2199 | 794 | 1405 | 141 | 64 | 77 | h+v | 1FL 4x4 | 2FL 3/4x2,5 | 1) | 1) | 1) | |
| 11 | PN66-11 + M6-400 | 18,5 | 25 | 39 | 144 | 153 | 2316 | 794 | 1522 | 148 | 64 | 84 | h+v | 1FL 4x4 | 2FL 3/4x2,5 | 1) | 1) | 1) | |
| 12 | PN66-12 + M6-460 | 22 | 30 | 46,5 | 144 | 153 | 2493 | 854 | 1639 | 161 | 70 | 91 | h+v | 1FL 4x6 | 2FL 3/4x2,5 | 1) | 1) | 1) | |
| 13 | PN66-13 + M6-460 | 22 | 30 | 46,5 | 144 | 153 | 2610 | 854 | 1756 | 168 | 70 | 98 | h+v | 1FL 4x6 | 2FL 3/4x2,5 | 1) | 1) | 1) | |
| 14 | PN66-14 + M6-460 | 22 | 30 | 46,5 | 144 | 153 | 2727 | 854 | 1873 | 175 | 70 | 105 | h+v | 1FL 4x6 | 2FL 3/4x2,5 | 1) | 1) | 1) | |
| 15 | PN66-15 + M6-530 | 26 | 35 | 54 | 144 | 153 | 2914 | 924 | 1990 | 190 | 78 | 112 | h+v | 1FL 4x6 | 2FL 3/4x2,5 | 1) | 1) | 1) | |
| 16 | PN66-16 + M6-530 | 26 | 35 | 54 | 144 | 153 | 3031 | 924 | 2107 | 197 | 78 | 119 | h+v | 1FL 4x6 | 2FL 3/4x2,5 | 1) | 1) | 1) | |
| 17 | PN66-17 + M6-600 | 30 | 40 | 62 | 144 | 157 | 3218 | 994 | 2224 | 212 | 86 | 126 | h+v | 1FL 4x10 | 2FL 3/4x4 | 1) | 1) | 1) | |
| 18 | PN66-18 + M6-600 | 30 | 40 | 62 | 144 | 157 | 3335 | 994 | 2341 | 219 | 86 | 133 | h+v | 1FL 4x10 | 2FL 3/4x4 | 1) | 1) | 1) | |
| 19 | PN66-19 + M6-600 | 30 | 40 | 62 | 144 | 157 | 3452 | 994 | 2458 | 226 | 86 | 140 | h+v | 1FL 4x10 | 2FL 3/4x4 | 1) | 1) | 1) | |
| 20 | PN66-20 + M6-650 | 33 | 45 | 68 | 144 | 157 | 3619 | 1044 | 2575 | 239 | 92 | 147 | h+v | 1FL 4x10 | 2FL 3/4x4 | 1) | 1) | 1) | |
| 21 | PN66-21 + M6-720 | 37 | 50 | 76 | 144 | 157 | 3806 | 1114 | 2692 | 253 | 99 | 154 | h+v | 1FL 4x10 | 2FL 3/4x4 | 1) | 1) | 1) | |
| 22 | PN66-22 + M6-720 | 37 | 50 | 76 | 144 | 157 | 3923 | 1114 | 2809 | 260 | 99 | 161 | h+v | 1FL 4x10 | 2FL 3/4x4 | 1) | 1) | 1) | |
| 23 | PN66-23 + M6-720 | 37 | 50 | 76 | 144 | 157 | 4040 | 1114 | 2926 | 267 | 99 | 168 | h+v | 1FL 4x10 | 2FL 3/4x4 | 1) | 1) | 1) | |
| 24 | PN66-24 + M6-720 | 37 | 50 | 76 | 144 | 157 | 4157 | 1114 | 3043 | 274 | 99 | 175 | h+v | 1FL 4x10 | 2FL 3/4x4 | 1) | 1) | 1) | |
| 25 | PN66-25 + FR6-45 | 45 | 60 | 93,9 | 136,5 | 157 | 4717 | 1557 | 3160 | 317 | 135 | 182 | h+v | 1FL 4x8,4 | 2FL 4x8,4 | 1) | 1) | 1) | |
| 26 | PN66-26 + FR6-45 | 45 | 60 | 93,9 | 136,5 | 157 | 4834 | 1557 | 3277 | 324 | 135 | 189 | h+v | 1FL 4x8,4 | 2FL 4x8,4 | 1) | 1) | 1) | |
| 27 | PN66-27 + FR6-45 | 45 | 60 | 93,9 | 136,5 | 157 | 4951 | 1557 | 3394 | 331 | 135 | 196 | h+v | 1FL 4x8,4 | 2FL 4x8,4 | 1) | 1) | 1) | |
| 28 | PN66-28 + FR6-45 | 45 | 60 | 93,9 | 136,5 | 157 | 5068 | 1557 | 3511 | 338 | 135 | 203 | h+v | 1FL 4x8,4 | 2FL 4x8,4 | 1) | 1) | 1) | |

Remarks :

- Details on request
- Motors "M...." are PLEUGER rewindable motors. Motors "FR..." are FRANKLIN canned-type motors.
Motor selection for water temp. 20 °C and velocity at motor surface ≥ 0,2m/sec . Motor leads must be submerged.