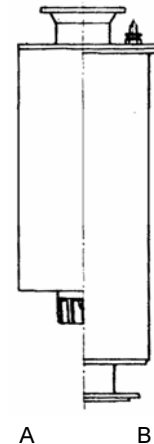
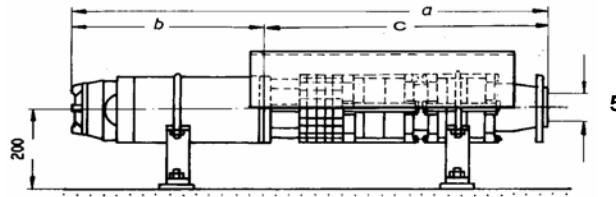


| Σύνδεση με τον καταθλιπτικό αγωγό / piping connection | | | | | |
|---|--|--|----------------------------|-----------------------|----------------------------|
| αρ. Στοιχίου Figure | Στόμιο εξαγωγής με αντεπίστροφη βαλβίδα Non-Return Valve | Στόμιο εξαγωγ. χωρίς βαλβίδα Taper | Μήκος Length e mm | Βάρος Weight kg | τοποθέτηση Installation |
| 1 | G2½ (1...24 stages) | | 73 | 2 | v |
| 1 | G3 (26...50 stages) | | 182 | 7 | v |
| | | | | | |
| | | | | | |
| | | | | | |



A : cooling shroud
B : pressure shroud (Booster)

| Curve | Αντλία + Κινητήρας Pump + Motor | ονομαστ. στοιχεία Κινητήρα Motor rated data | | | | max Ø mm | Μήκος / Length | | | Βάρος / Weight | | | τοποθέτηση Installation | Καλώδια κινητήρα Motor leads | | Μανδύας ψύξης/πίεσης cooling/pressure Shroud | | |
|-------|------------------------------------|--|-----|---------------|---------|-------------|-----------------|------------------|-----------------|----------------|-------------|------------|----------------------------|---------------------------------|-------------------|---|---------|----|
| | | P kW | HP | I (400V) A | Ø mm | | a unit mm | b motor mm | c pump mm | unit kg | motor kg | pump kg | | απευθείας direct | Y-Δ star-delta | D mm | L mm | kg |
| 4 | NE64- 4 + FR4-2,2 | 2,2 | 3 | 5,9 | 95,25 | 142 | 704 | 356 | 348 | 29,5 | 13,5 | 16 | h+v | 1FL 4x1,5 | ----- | 1) | 1) | 1) |
| 5 | NE64- 5 + FR4-2,2 | 2,2 | 3 | 5,9 | 95,25 | 142 | 742 | 356 | 386 | 30,5 | 13,5 | 17 | h+v | 1FL 4x1,5 | ----- | 1) | 1) | 1) |
| 6 | NE64- 6 + FR4-3,0 | 3 | 4 | 7,8 | 95,25 | 142 | 847 | 423 | 424 | 34 | 16 | 18 | h+v | 1FL 4x1,5 | ----- | 1) | 1) | 1) |
| 7 | NE64- 7 + FR4-4,0 | 4 | 5,5 | 10 | 95,25 | 142 | 1045 | 583 | 462 | 42,5 | 23,5 | 19 | h+v | 1FL 4x1,5 | ----- | 1) | 1) | 1) |
| 8 | NE64- 8 + FR4-4,0 | 4 | 5,5 | 10 | 95,25 | 142 | 1047 | 583 | 464 | 43,5 | 23,5 | 20 | h+v | 1FL 4x1,5 | ----- | 1) | 1) | 1) |
| 9 | NE64- 9 + FR4-4,0 | 4 | 5,5 | 10 | 95,25 | 142 | 1085 | 583 | 502 | 44,5 | 23,5 | 21 | h+v | 1FL 4x1,5 | ----- | 1) | 1) | 1) |
| 10 | NE64-10 + FR4-5,5 | 5,5 | 7,5 | 13,7 | 95,25 | 142 | 1237 | 697 | 540 | 51 | 29 | 22 | h+v | 1FL 4x1,5 | ----- | 1) | 1) | 1) |
| 11 | NE64-11 + FR4-5,5 | 5,5 | 7,5 | 13,7 | 95,25 | 142 | 1275 | 697 | 578 | 52 | 29 | 23 | h+v | 1FL 4x1,5 | ----- | 1) | 1) | 1) |
| 12 | NE64-12 + FR4-5,5 | 5,5 | 7,5 | 13,7 | 95,25 | 142 | 1363 | 697 | 666 | 55 | 29 | 26 | h+v | 1FL 4x1,5 | ----- | 1) | 1) | 1) |
| 13 | NE64-13 + FRw6"-7,5 | 7,5 | 10 | 17,7 | 144,5 | 144,5 | 1423 | 719 | 704 | 77 | 50 | 27 | h+v | 1FL 4x2,5 | 2FL 3/4x2,5 | 1) | 1) | 1) |
| 14 | NE64-14 + FRw6"-7,5 | 7,5 | 10 | 17,7 | 144,5 | 144,5 | 1461 | 719 | 742 | 78 | 50 | 28 | h+v | 1FL 4x2,5 | 2FL 3/4x2,5 | 1) | 1) | 1) |
| 15 | NE64-15 + FRw6"-7,5 | 7,5 | 10 | 17,7 | 144,5 | 144,5 | 1499 | 719 | 780 | 79 | 50 | 29 | h+v | 1FL 4x2,5 | 2FL 3/4x2,5 | 1) | 1) | 1) |
| 16 | NE64-16 + FRw6"-7,5 | 7,5 | 10 | 17,7 | 144,5 | 144,5 | 1537 | 719 | 818 | 80 | 50 | 30 | h+v | 1FL 4x2,5 | 2FL 3/4x2,5 | 1) | 1) | 1) |
| 17 | NE64-17 + FRw6"-7,5 | 7,5 | 10 | 17,7 | 144,5 | 144,5 | 1575 | 719 | 856 | 81 | 50 | 31 | h+v | 1FL 4x2,5 | 2FL 3/4x2,5 | 1) | 1) | 1) |
| 18 | NE64-18 + FRw6"-11 | 11 | 15 | 25,2 | 144,5 | 144,5 | 1673 | 779 | 894 | 88 | 56 | 32 | h+v | 1FL 4x2,5 | 2FL 3/4x2,5 | 1) | 1) | 1) |
| 20 | NE64-20 + FRw6"-11 | 11 | 15 | 25,2 | 144,5 | 144,5 | 1749 | 779 | 970 | 90 | 56 | 34 | h+v | 1FL 4x2,5 | 2FL 3/4x2,5 | 1) | 1) | 1) |
| 22 | NE64-22 + FRw6"-11 | 11 | 15 | 25,2 | 144,5 | 144,5 | 1825 | 779 | 1046 | 92 | 56 | 36 | h+v | 1FL 4x2,5 | 2FL 3/4x2,5 | 1) | 1) | 1) |
| 24 | NE64-24 + FRw6"-11 | 11 | 15 | 25,2 | 144,5 | 144,5 | 1901 | 779 | 1122 | 94 | 56 | 38 | h+v | 1FL 4x2,5 | 2FL 3/4x2,5 | 1) | 1) | 1) |
| 26 | NE64-26 + FRw6"-15 | 15 | 20 | 33,1 | 144,5 | 144,5 | 2228 | 874 | 1354 | 106 | 66 | 40 | h+v | 1FL 4x4 | 2FL 3/4x2,5 | 1) | 1) | 1) |
| 28 | NE64-28 + FRw6"-15 | 15 | 20 | 33,1 | 144,5 | 144,5 | 2304 | 874 | 1430 | 108 | 66 | 42 | h+v | 1FL 4x4 | 2FL 3/4x2,5 | 1) | 1) | 1) |
| 30 | NE64-30 + FRw6"-15 | 15 | 20 | 33,1 | 144,5 | 144,5 | 2448 | 874 | 1574 | 112 | 66 | 46 | h+v | 1FL 4x4 | 2FL 3/4x2,5 | 1) | 1) | 1) |
| 32 | NE64-32 + FRw6"-15 | 15 | 20 | 33,1 | 144,5 | 144,5 | 2524 | 874 | 1650 | 114 | 66 | 48 | h+v | 1FL 4x4 | 2FL 3/4x2,5 | 1) | 1) | 1) |
| 34 | NE64-34 + FRw6"-15 | 15 | 20 | 33,1 | 144,5 | 144,5 | 2600 | 874 | 1726 | 116 | 66 | 50 | h+v | 1FL 4x4 | 2FL 3/4x2,5 | 1) | 1) | 1) |
| 36 | NE64-36 + FRw6"-18,5 | 18,5 | 25 | 42 | 144,5 | 144,5 | 2721 | 919 | 1802 | 122 | 70 | 52 | h+v | 1FL 4x4 | 2FL 3/4x2,5 | 1) | 1) | 1) |
| 38 | NE64-38 + FRw6"-18,5 | 18,5 | 25 | 42 | 144,5 | 144,5 | 2797 | 919 | 1878 | 124 | 70 | 54 | h+v | 1FL 4x4 | 2FL 3/4x2,5 | 1) | 1) | 1) |
| 40 | NE64-40 + FRw6"-18,5 | 18,5 | 25 | 42 | 144,5 | 144,5 | 2873 | 919 | 1954 | 126 | 70 | 56 | h+v | 1FL 4x4 | 2FL 3/4x2,5 | 1) | 1) | 1) |
| 42 | NE64-42 + FRw6"-18,5 | 18,5 | 25 | 42 | 144,5 | 144,5 | 2949 | 919 | 2030 | 128 | 70 | 58 | h+v | 1FL 4x4 | 2FL 3/4x2,5 | 1) | 1) | 1) |
| 44 | NE64-44 + FRw6"-22 | 22 | 30 | 49 | 144,5 | 144,5 | 3183 | 1009 | 2174 | 141 | 79 | 62 | h+v | 1FL 4x4 | 2FL 3/4x2,5 | 1) | 1) | 1) |
| 46 | NE64-46 + FRw6"-22 | 22 | 30 | 49 | 144,5 | 144,5 | 3259 | 1009 | 2250 | 143 | 79 | 64 | h+v | 1FL 4x4 | 2FL 3/4x2,5 | 1) | 1) | 1) |
| 48 | NE64-48 + FRw6"-22 | 22 | 30 | 49 | 144,5 | 144,5 | 3335 | 1009 | 2326 | 145 | 79 | 66 | h+v | 1FL 4x4 | 2FL 3/4x2,5 | 1) | 1) | 1) |

Remarks :

- 1) Details on request
- 2) Motors "FRw..." are FRANKLIN rewindable motors. Motors "FR..." are FRANKLIN canned-type motors.
Motor selection for water temp. 20 °C and velocity at motor surface ≥ 0,2m/sec. Motor leads must be submerged.