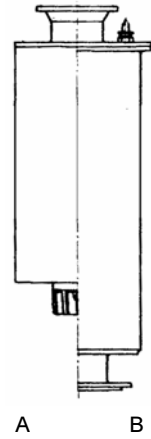
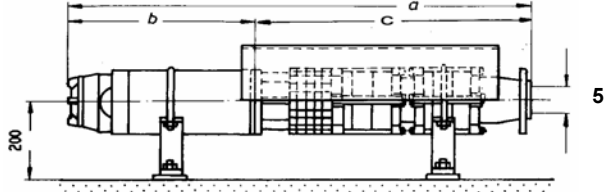


Σύνδεση με τον καταθλιπτικό αγωγό / piping connection					
αφ. Στοιχείου Figure	Στόμιο εξαγωγής με αντεπίστροφη βαλβίδα Non-Return Valve	Στόμιο εξαγωγής χωρίς βαλβίδα Taper	Μήκος Length e mm	Βάρος Weight kg	τοποθέτηση Installation
1	G3		200	12	v
1	G4		200	13	v
		G3	56	4	h+v



A : cooling shroud
B : pressure shroud (Booster)

Curve	Αντλία + Κινητήρας Pump + Motor	ονομαστ. στοιχεία Κινητήρα Motor rated data					max Ø mm	Μήκος / Length			Βάρος / Weight			τοποθέτηση Installation	Καλώδια κινητήρα Motor leads		Μανδύας ψύξης/πίεσης cooling/pressure Shroud					
		P		I (400V)	Ø	a		b	c	unit	motor	pump	kg		motor	pump	kg	kg	kg	D	L	kg
		kW	HP	A	mm	mm		mm	mm	mm	mm	mm	mm		kg	kg	kg	kg	kg	mm	mm	kg
2	NB86-2 + M6-200	7,5	10	17,2	144	192	1032	594	438	67	42	25	h+v	1FL 4x2,5	2FL 3/4x2,5	1)	1)	1)				
3	NB86-3 + M6-270	11	15	24	144	192	1157	664	493	77	49	28	h+v	1FL 4x2,5	2FL 3/4x2,5	1)	1)	1)				
4	NB86-4 + M6-340	15	20	32	144	192	1282	734	548	88	57	31	h+v	1FL 4x4	2FL 3/4x2,5	1)	1)	1)				
5	NB86-5 + M6-400	18,5	25	39	144	192	1397	794	603	98	64	34	h+v	1FL 4x4	2FL 3/4x2,5	1)	1)	1)				
6	NB86-6 + M6-460	22	30	46,5	144	192	1512	854	658	107	70	37	h+v	1FL 4x6	2FL 3/4x2,5	1)	1)	1)				
7	NB86-7 + M6-530	26	35	54	144	192	1637	924	713	118	78	40	h+v	1FL 4x6	2FL 3/4x2,5	1)	1)	1)				
8	NB86-8 + M6-600	30	40	62	144	192	1762	994	768	129	86	43	h+v	1FL 4x10	2FL 3/4x4	1)	1)	1)				
9	NB86-9 + M6-600	30	40	62	144	192	1939	994	945	149	86	63	h+v	1FL 4x10	2FL 3/4x4	1)	1)	1)				
10	NB86-10 + M6-720	37	50	76	144	192	2114	1114	1000	165	99	66	h+v	1FL 4x10	2FL 3/4x4	1)	1)	1)				
11	NB86-11 + M8-410	40	55	79	190	195	2296	1118	1178	218	139	79	h+v	1FL 4x16	2FL 3/4x6	1)	1)	1)				
12	NB86-12 + M8-480	46	62	90	190	195	2421	1188	1233	236	154	82	h+v	1FL 4x16	2FL 3/4x6	1)	1)	1)				
13	NB86-13 + M8-530	50	68	96	190	195	2526	1238	1288	249	164	85	h+v	1FL 4x16	2FL 3/4x6	1)	1)	1)				
14	NB86-14 + M8-530	50	68	96	190	195	2581	1238	1343	252	164	88	h+v	1FL 4x16	2FL 3/4x6	1)	1)	1)				
15	NB86-15 + M8-580	55	75	105	190	198	2686	1288	1398	266	175	91	h+v	4Rd 1x16P	2FL 3/4x10	1)	1)	1)				
16	NB86-16 + M8-580	55	75	105	190	198	2741	1288	1453	269	175	94	h+v	4Rd 1x16P	2FL 3/4x10	1)	1)	1)				
17	NB86-17 + M8-650	60	80	115	190	198	2988	1358	1630	304	190	114	h+v	4Rd 1x16P	2FL 3/4x10	1)	1)	1)				
18	NB86-18 + M8-710	68	93	130	190	198	3103	1418	1685	319	202	117	h+v	4Rd 1x16P	2FL 3/4x10	1)	1)	1)				
19	NB86-19 + M8-710	68	93	130	190	198	3158	1418	1740	322	202	120	h+v	4Rd 1x16P	2FL 3/4x10	1)	1)	1)				
20	NB86-20 + M8-820	75	100	143	190	199	3323	1528	1795	348	225	123	v	4Rd 1x25P	2FL 3/4x16	1)	1)	1)				
21	NB86-21 + M8-820	75	100	143	190	199	3378	1528	1850	351	225	126	v	4Rd 1x25P	2FL 3/4x16	1)	1)	1)				
22	NB86-22 + M8-930	83	113	158	190	199	3543	1638	1905	378	249	129	v	4Rd 1x25P	2FL 3/4x16	1)	1)	1)				
23	NB86-23 + M8-930	83	113	158	190	199	3598	1638	1960	398	249	149	v	4Rd 1x25P	2FL 3/4x16	1)	1)	1)				
24	NB86-24 + M8-990	90	125	172	190	199	3713	1698	2015	413	261	152	v	4Rd 1x25P	2FL 3/4x16	1)	1)	1)				
25	NB86-25 + M8-990	90	125	172	190	199	3890	1698	2192	433	261	172	v	4Rd 1x25P	2FL 3/4x16	1)	1)	1)				
26	NB86-26 + M8-990	90	125	172	190	220	3890	1698	2192	433	261	172	v	4Rd 1x25P	2FL 3/4x16	1)	1)	1)				
27	NB86-27 + MI10-600	110	150	220	230	230	3725	1533	2192	448	276	172	h+v	4Rd 1x35P	4Rd 1x16P	1)	1)	1)				
28	NB86-28 + MI10-600	110	150	220	230	230	3725	1533	2192	448	276	172	h+v	4Rd 1x35P	4Rd 1x16P	1)	1)	1)				
29	NB86-29 + MI10-600	110	150	220	230	230	3725	1533	2192	448	276	172	h+v	4Rd 1x35P	4Rd 1x16P	1)	1)	1)				
30	NB86-30 + MI10-600	110	150	220	230	230	3725	1533	2192	448	276	172	h+v	4Rd 1x35P	4Rd 1x16P	1)	1)	1)				

Remarks :
 1) Details on request
 2) Motors "M...." are PLEUGER rewindable motors. Motors "FR..." are FRANKLIN canned-type motors.
 Motor selection for water temp. 20 °C and velocity at motor surface ≥ 0,2m/sec. Motor leads must be submerged.