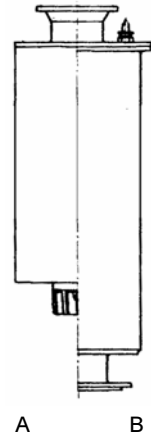
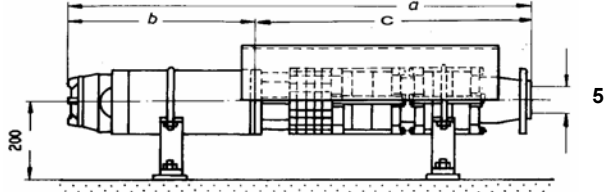


Σύνδεση με τον καταθλιπτικό αγωγό / piping connection

αφ. Στοιχείου Figure	Στόμιο εξαγωγής με αντεπίστροφη βαλβίδα Non-Return Valve	Στόμιο εξαγωγής χωρίς βαλβίδα Taper	Μήκος Length e mm	Βάρος Weight kg	τοποθέτηση Installation
1	G3		200	12	v
1	G4		200	13	v
		G3	56	4	h+v



A : cooling shroud
B : pressure shroud (Booster)

Curve	Αντλία + Κινητήρας Pump + Motor	ονομαστ. στοιχεία Κινητήρα Motor rated data					max Ø mm	Μήκος / Length			Βάρος / Weight			τοποθέτηση Installation	Καλώδια κινητήρα Motor leads		Μανδύας ψύξης/πίεσης cooling/pressure Shroud					
		P		I (400V)	Ø	a		b	c	unit	motor	pump	kg		motor	pump	kg	kg	kg	D	L	kg
		kW	HP	A	mm	mm		mm	mm	mm	mm	mm	mm		kg	kg	kg	kg	kg	mm	mm	kg
2	NB84-2 + M6-200	7,5	10	17,2	144	192	1032	594	438	67	42	25	h+v	1FL 4x2,5	2FL 3/4x2,5	1)	1)	1)				
3	NB84-3 + M6-200	7,5	10	17,2	144	192	1087	594	493	70	42	28	h+v	1FL 4x2,5	2FL 3/4x2,5	1)	1)	1)				
4	NB84-4 + M6-270	11	15	24	144	192	1212	664	548	80	49	31	h+v	1FL 4x2,5	2FL 3/4x2,5	1)	1)	1)				
5	NB84-5 + M6-270	11	15	24	144	192	1267	664	603	83	49	34	h+v	1FL 4x2,5	2FL 3/4x2,5	1)	1)	1)				
6	NB84-6 + M6-340	15	20	32	144	192	1392	734	658	94	57	37	h+v	1FL 4x4	2FL 3/4x2,5	1)	1)	1)				
7	NB84-7 + M6-340	15	20	32	144	192	1447	734	713	97	57	40	h+v	1FL 4x4	2FL 3/4x2,5	1)	1)	1)				
8	NB84-8 + M6-400	18,5	25	39	144	192	1562	794	768	107	64	43	h+v	1FL 4x4	2FL 3/4x2,5	1)	1)	1)				
9	NB84-9 + M6-400	18,5	25	39	144	192	1739	794	945	127	64	63	h+v	1FL 4x4	2FL 3/4x2,5	1)	1)	1)				
10	NB84-10 + M6-460	22	30	46,5	144	192	1854	854	1000	136	70	66	h+v	1FL 4x6	2FL 3/4x2,5	1)	1)	1)				
11	NB84-11 + M6-530	26	35	54	144	192	1979	924	1055	147	78	69	h+v	1FL 4x6	2FL 3/4x2,5	1)	1)	1)				
12	NB84-12 + M6-530	26	35	54	144	192	2034	924	1110	150	78	72	h+v	1FL 4x6	2FL 3/4x2,5	1)	1)	1)				
13	NB84-13 + M6-600	30	40	62	144	192	2159	994	1165	161	86	75	h+v	1FL 4x10	2FL 3/4x4	1)	1)	1)				
14	NB84-14 + M6-600	30	40	62	144	192	2214	994	1220	164	86	78	h+v	1FL 4x10	2FL 3/4x4	1)	1)	1)				
15	NB84-15 + M6-600	30	40	62	144	192	2269	994	1275	167	86	81	h+v	1FL 4x10	2FL 3/4x4	1)	1)	1)				
16	NB84-16 + M6-650	33	45	68	144	192	2374	1044	1330	176	92	84	h+v	1FL 4x10	2FL 3/4x4	1)	1)	1)				
17	NB84-17 + M6-720	37	50	76	144	192	2566	1114	1452	200	99	101	h+v	1FL 4x10	2FL 3/4x4	1)	1)	1)				
18	NB84-18 + M6-720	37	50	76	144	195	2799	1114	1685	216	99	117	h+v	1FL 4x10	2FL 3/4x4	1)	1)	1)				
19	NB84-19 + M8-480	46	62	90	190	195	2928	1188	1740	274	154	120	h+v	1FL 4x16	2FL 3/4x6	1)	1)	1)				
20	NB84-20 + M8-480	46	62	90	190	195	2983	1188	1795	277	154	123	h+v	1FL 4x16	2FL 3/4x6	1)	1)	1)				
21	NB84-21 + M8-480	46	62	90	190	195	3038	1188	1850	280	154	126	h+v	1FL 4x16	2FL 3/4x6	1)	1)	1)				
22	NB84-22 + M8-480	46	62	90	190	195	3093	1188	1905	283	154	129	h+v	1FL 4x16	2FL 3/4x6	1)	1)	1)				
23	NB84-23 + M8-530	50	68	96	190	198	3198	1238	1960	296	164	132	h+v	1FL 4x16	2FL 3/4x6	1)	1)	1)				
24	NB84-24 + M8-580	55	75	105	190	198	3303	1288	2015	310	175	135	h+v	4Rd 1x16P	2FL 3/4x10	1)	1)	1)				
25	NB84-25 + M8-580	55	75	105	190	198	3480	1288	2192	330	175	155	h+v	4Rd 1x16P	2FL 3/4x10	1)	1)	1)				
26	NB84-26 + M8-580	55	75	105	190	198	3535	1288	2247	333	175	158	h+v	4Rd 1x16P	2FL 3/4x10	1)	1)	1)				
27	NB84-27 + M8-650	60	80	115	190	198	3660	1358	2302	351	190	161	h+v	4Rd 1x16P	2FL 3/4x10	1)	1)	1)				
28	NB84-28 + M8-650	60	80	115	190	198	3715	1358	2357	354	190	164	h+v	4Rd 1x16P	2FL 3/4x10	1)	1)	1)				
29	NB84-29 + M8-710	68	93	130	190	198	3830	1418	2412	369	202	167	h+v	4Rd 1x16P	2FL 3/4x10	1)	1)	1)				
30	NB84-30 + M8-710	68	93	130	190	198	3885	1418	2467	372	202	170	h+v	4Rd 1x16P	2FL 3/4x10	1)	1)	1)				
31	NB84-31 + M8-710	68	93	130	190	199	3940	1418	2522	375	202	173	h+v	4Rd 1x16P	2FL 3/4x10	1)	1)	1)				
32	NB84-32 + M8-820	75	100	143	190	199	4105	1528	2577	401	225	176	v	4Rd 1x25P	2FL 3/4x16	1)	1)	1)				
33	NB84-33 + M8-820	75	100	143	190	199	4282	1528	2754	421	225	196	v	4Rd 1x25P	2FL 3/4x16	1)	1)	1)				
34	NB84-34 + M8-820	75	100	143	190	199	4337	1528	2809	424	225	199	v	4Rd 1x25P	2FL 3/4x16	1)	1)	1)				
35	NB84-35 + M8-820	75	100	143	190	199	4392	1528	2864	427	225	202	v	4Rd 1x25P	2FL 3/4x16	1)	1)	1)				
36	NB84-36 + M8-930	83	113	158	190	199	4557	1638	2919	454	249	205	v	4Rd 1x25P	2FL 3/4x16	1)	1)	1)				

Remarks :

- 1) Details on request
- 2) Motors "M...." are PLEUGER rewindable motors. Motors "FR..." are FRANKLIN canned-type motors.
Motor selection for water temp. 20 °C and velocity at motor surface ≥ 0,2m/sec. Motor leads must be submerged.