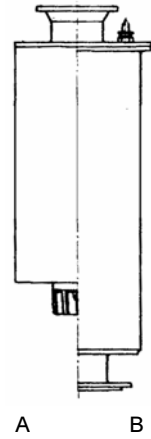
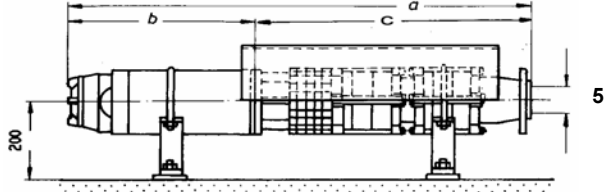


Σύνδεση με τον καταθλιπτικό αγωγό / piping connection					
αφ. Στοιχίου Figure	Στόμιο εξαγωγής με αντεπίστροφη βαλβίδα Non-Return Valve	Στόμιο εξαγωγής χωρίς βαλβίδα Taper	Μήκος Length e mm	Βάρος Weight kg	τοποθέτηση Installation
1	G3		200	12	v
1	G4		200	13	v
		G3	56	4	h+v



A : cooling shroud  
B : pressure shroud (Booster)

Curve	Αντλία + Κινητήρας Pump + Motor	ονομαστ. στοιχεία Κινητήρα Motor rated data					max Ø mm	Μήκος / Length			Βάρος / Weight			τοποθέτηση Installation	Καλώδια κινητήρα Motor leads		Μανδύας ψύξης/πίεσης cooling/pressure Shroud					
		P		I (400V)	Ø	a		b	c	unit	motor	pump	kg		motor	pump	kg	απευθείας direct	Y-Δ star-delta	D	L	kg
		kW	HP	A	mm	mm		mm	mm	mm	mm	mm	mm		kg	kg	kg			mm	mm	kg
2	NB83-2 + M6-200	7,5	10	17,2	144	192	1032	594	438	67	42	25	h+v	1FL 4x2,5	2FL 3/4x2,5	1)	1)	1)				
3	NB83-3 + M6-200	7,5	10	17,2	144	192	1087	594	493	70	42	28	h+v	1FL 4x2,5	2FL 3/4x2,5	1)	1)	1)				
4	NB83-4 + M6-200	7,5	10	17,2	144	192	1142	594	548	73	42	31	h+v	1FL 4x2,5	2FL 3/4x2,5	1)	1)	1)				
5	NB83-5 + M6-270	11	15	24	144	192	1267	664	603	83	49	34	h+v	1FL 4x2,5	2FL 3/4x2,5	1)	1)	1)				
6	NB83-6 + M6-270	11	15	24	144	192	1322	664	658	86	49	37	h+v	1FL 4x2,5	2FL 3/4x2,5	1)	1)	1)				
7	NB83-7 + M6-340	15	20	32	144	192	1447	734	713	97	57	40	h+v	1FL 4x4	2FL 3/4x2,5	1)	1)	1)				
8	NB83-8 + M6-340	15	20	32	144	192	1502	734	768	100	57	43	h+v	1FL 4x4	2FL 3/4x2,5	1)	1)	1)				
9	NB83-9 + M6-400	18,5	25	39	144	192	1739	794	945	127	64	63	h+v	1FL 4x4	2FL 3/4x2,5	1)	1)	1)				
10	NB83-10 + M6-400	18,5	25	39	144	192	1794	794	1000	130	64	66	h+v	1FL 4x4	2FL 3/4x2,5	1)	1)	1)				
11	NB83-11 + M6-460	22	30	46,5	144	192	1909	854	1055	139	70	69	h+v	1FL 4x6	2FL 3/4x2,5	1)	1)	1)				
12	NB83-12 + M6-460	22	30	46,5	144	192	1964	854	1110	142	70	72	h+v	1FL 4x6	2FL 3/4x2,5	1)	1)	1)				
13	NB83-13 + M6-530	26	35	54	144	192	2089	924	1165	153	78	75	h+v	1FL 4x6	2FL 3/4x2,5	1)	1)	1)				
14	NB83-14 + M6-530	26	35	54	144	192	2144	924	1220	156	78	78	h+v	1FL 4x6	2FL 3/4x2,5	1)	1)	1)				
15	NB83-15 + M6-600	30	40	62	144	192	2269	994	1275	167	86	81	h+v	1FL 4x10	2FL 3/4x4	1)	1)	1)				
16	NB83-16 + M6-600	30	40	62	144	192	2324	994	1330	170	86	84	h+v	1FL 4x10	2FL 3/4x4	1)	1)	1)				
17	NB83-17 + M6-650	33	45	68	144	192	2551	1044	1507	196	92	104	h+v	1FL 4x10	2FL 3/4x4	1)	1)	1)				
18	NB83-18 + M6-720	37	50	76	144	192	2676	1114	1562	206	99	107	h+v	1FL 4x10	2FL 3/4x4	1)	1)	1)				
19	NB83-19 + M6-720	37	50	76	144	192	2731	1114	1617	209	99	110	h+v	1FL 4x10	2FL 3/4x4	1)	1)	1)				
20	NB83-20 + M8-480	46	62	90	190	195	2983	1188	1795	277	154	123	h+v	1FL 4x16	2FL 3/4x6	1)	1)	1)				
21	NB83-21 + M8-480	46	62	90	190	195	3038	1188	1850	280	154	126	h+v	1FL 4x16	2FL 3/4x6	1)	1)	1)				
22	NB83-22 + M8-480	46	62	90	190	195	3093	1188	1905	283	154	129	h+v	1FL 4x16	2FL 3/4x6	1)	1)	1)				
23	NB83-23 + M8-480	46	62	90	190	195	3148	1188	1960	286	154	132	h+v	1FL 4x16	2FL 3/4x6	1)	1)	1)				
24	NB83-24 + M8-530	50	68	96	190	195	3253	1238	2015	299	164	135	h+v	1FL 4x16	2FL 3/4x6	1)	1)	1)				
25	NB83-25 + M8-530	50	68	96	190	198	3430	1238	2192	319	164	155	h+v	1FL 4x16	2FL 3/4x6	1)	1)	1)				
26	NB83-26 + M8-580	55	75	105	190	198	3535	1288	2247	333	175	158	h+v	4Rd 1x16P	2FL 3/4x10	1)	1)	1)				
27	NB83-27 + M8-580	55	75	105	190	198	3590	1288	2302	336	175	161	h+v	4Rd 1x16P	2FL 3/4x10	1)	1)	1)				
28	NB83-28 + M8-580	55	75	105	190	198	3645	1288	2357	339	175	164	h+v	4Rd 1x16P	2FL 3/4x10	1)	1)	1)				
29	NB83-29 + M8-650	60	80	115	190	198	3770	1358	2412	357	190	167	h+v	4Rd 1x16P	2FL 3/4x10	1)	1)	1)				
30	NB83-30 + M8-650	60	80	115	190	198	3825	1358	2467	360	190	170	h+v	4Rd 1x16P	2FL 3/4x10	1)	1)	1)				
31	NB83-31 + M8-710	68	93	130	190	198	3940	1418	2522	375	202	173	h+v	4Rd 1x16P	2FL 3/4x10	1)	1)	1)				
32	NB83-32 + M8-710	68	93	130	190	198	3995	1418	2577	378	202	176	h+v	4Rd 1x16P	2FL 3/4x10	1)	1)	1)				
33	NB83-33 + M8-710	68	93	130	190	198	4172	1418	2754	398	202	196	h+v	4Rd 1x16P	2FL 3/4x10	1)	1)	1)				
34	NB83-34 + M8-710	68	93	130	190	199	4227	1418	2809	401	202	199	h+v	4Rd 1x16P	2FL 3/4x10	1)	1)	1)				
35	NB83-35 + M8-820	75	100	143	190	199	4392	1528	2864	427	225	202	v	4Rd 1x25P	2FL 3/4x16	1)	1)	1)				
36	NB83-36 + M8-820	75	100	143	190	199	4447	1528	2919	430	225	205	v	4Rd 1x25P	2FL 3/4x16	1)	1)	1)				

Remarks :

- 1) Details on request
  - 2) Motors "M...." are PLEUGER rewindable motors. Motors "FR..." are FRANKLIN canned-type motors.
- Motor selection for water temp. 20 °C and velocity at motor surface ≥ 0,2m/sec. Motor leads must be submerged.