

Corrosion resistant stainless steel pumps





PXFLOW corrosion resistant pumps are constructed of stainless steel 316 or Duplex for corrosive liquids or salt water Applications, where cast iron is not recommended. Stainless steel pumps are *corrosion resistant*.

PXFLOW “modular” material selection system makes it easy and economical for the customer to **adapt the pump to specific requirements**.

The standard material construction of PXFLOW pump can be upgraded for overall corrosion resistance until it achieves the right **combination** best suited and **most economical** for the intended application.

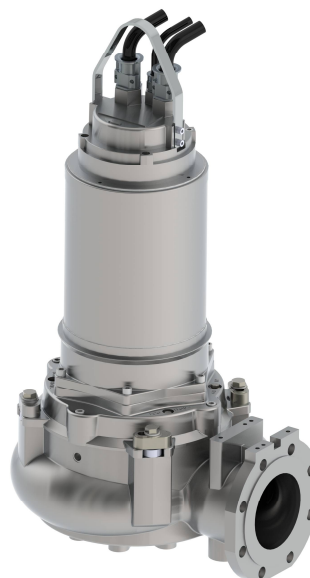
Bellow some examples

1. Stainless steel impeller in 316 or Duplex
Volute and motor housing in cast iron
Outer shaft Retaining Ring special in 316
2. Same as 1 with ceramic coating inside volute and lower motor parts (which are contact with pumping media)
3. Stainless steel impeller in 316 or Duplex
Volute and lower motor parts (which are contact with pumping media) in 316 . Duplex on request
Outer shaft Retaining Ring special in 316
Rotor shaft , cartridge sleeve (shaft protection sleeve) in Duplex.
4. Outer motor casing (parts which contact with the liquid media) or combination some motor parts cooling jacket (PX4 series) in 316. Duplex on request
Volute, impeller in 316 .Duplex on request
Outer shaft Retaining Ring special in 316
Rotor shaft , cartridge sleeve (shaft protection sleeve) in Duplex.

Example No3



Example No4



Drinking water • sea water • waste water • geothermal water • underground dewatering • irrigation • fire protection • pressure boosting



PAPANTONATOS S.A.

Roumelis & Kapetan Zacharia (ex. Afon Ntouna) 1
13677 Acharnes Greece
TEL: (+30)210-2431111 FAX: 210-2431601
Internet : www.papantonatos.gr
VAT Nr: EL094360632